



DIGITAL ACOUSTIC LOG GAMMA RAY LOG

Baker Atlas

FILE NO:

COMPANY

YULCAN MINERALS INC.

API NO:

WELL

HURRICANE NO. 2 (WHIP #1)

FIELD

BAY ST. GEORGE

Ver. 3.87

PROVINCE

NEWFOUNDLAND

LOCATION:

LIC: 03-107

WESTERN NEWFOUNDLAND

OTHER SERVICES
ZXL-GR
HDL-GR

ST. GEORGES BAY

LAT 48.267700 N

LONG 58.67228 W

PERMANENT DATUM

G.L.

ELEVATION

135.0 M

LOG MEASURED FROM

K.B.

3.3 M

ABOVE P.D.

DRILL MEAS. FROM

KELLY BUSHING

ELEVATIONS:

KB 138.3 M

DF

OL 135.0 M

DATE	13-DEC-2005
RUN	1
SERVICE ORDER	204627
DEPTH DRILLER	935.2 M
DEPTH LOGGER	931.9 M
BOTTOM LOGGED INTERVAL	916.3 M
TOP LOGGED INTERVAL	322.2 M
CASING DRILLER	177.8 MM
CASING LOGGER	322.2 M
BIT SIZE	189.0 MM
TYPE OF FLUID IN HOLE	FRESH WATER
DENSITY	N/A
PH	N/A
SOURCE OF SAMPLE	FLUORINE
RM AT MEAS. TEMP.	5.656 CHMM
RM AT MEAS. TEMP.	18.8 DEGC
RM AT MEAS. TEMP.	N/A
RM AT MEAS. TEMP.	N/A
SOURCE OF RMF	MEASURED
RM AT BHT	7.31 CHMM
TIME SINCE CIRCULATION	7.25 HOURS
MAX. RECORDED TEMP.	9.67 DEGC
EQUIP. NO.	HSL 8616
RECORDED BY	Y. OBIRI
WITNESSED BY	K. SMITH

IN MAKING INTERPRETATIONS OF LOGS OUR EMPLOYEES WILL GIVE CUSTOMER THE BENEFIT OF THEIR BEST JUDGEMENT. BUT SINCE ALL INTERPRETATIONS ARE OPINIONS BASED ON INFERENCES FROM ELECTRICAL OR OTHER MEASUREMENTS, WE CANNOT, AND WE DO NOT GUARANTEE THE ACCURACY OR CORRECTNESS OF ANY INTERPRETATION. WE SHALL NOT BE LIABLE OR RESPONSIBLE FOR ANY LOSS, COST, DAMAGES, OR EXPENSES WHATSOEVER INCURRED OR SUSTAINED BY THE CUSTOMER RESULTING FROM ANY INTERPRETATION MADE BY ANY OF OUR EMPLOYEES.

BOREHOLE RECORD

BIT SIZE	FROM	TO
158.0 MM	323.2 M	935.2 M

CASING RECORD

SIZE	WEIGHT	GRADE	FROM	TO
244.5 MM	35.6 KG/M	K-55	0 M	19.36 M
177.8 MM	28.8 KG/M	H-40	29.01 M	323.2 M

REMARKS

RUN 1 TRIP 1: DRILLING COMPLETED: 15:30 HRS. 11-DEC-05
WELL WAS AIR DRILLED AND FILLED WITH FRESH WATER PRIOR TO LOGGING.

LAST CIRCULATION ON BOTTOM: 00:00 HRS. 13-DEC-05

TIME ENTERING HOLE: 06:00 HRS. 13-DEC-05

TIME AT BOTTOM: 07:00 HRS. 13-DEC-05

TIME LAST ON BOTTOM: 07:15 HRS. 13-DEC-05

TIME EXITING HOLE: 08:30 HRS. 13-DEC-05

HDL/DAL/GR RUN IN COMBINATION.

DELTA T DETERMINED BY AVAL SEIBLANCE ALGORITHM

DEPTH DETERMINED BY WFN SOUNDING RECORDING
 INTEGRATED TRAVEL TIME AT CASING SHOE APPROX. 123 MS
 CALIPER COPIED FROM ZDL/CN/GR RUN.

DATE INDICATED ON BEFORE/AFTER VERIFICATIONS AND FILE HEADERS IS INCORRECT DUE
 TO MISSING SOFTWARE UPDATE.

CREW : D.KIRWAN

EQUIPMENT DATA

RUN	TRIP	TOOL	SERIES NO.	SERIAL NO.	POSITION
1	1	TTRM	3881XA	178328	FREE
1	1	CON REM	3514XA	153304	FREE
1	1	DGR	1328XA	153172	FREE
1	1	KJLT	3623XA	186276	KNUCKLE JOINT
1	1	CENT	4341XA	388754	CENTRALIZER
1	1	DAL-E	1887EA	153562	ELECTRONICS
1	1	DAL-M	1880MA	154418	CENTRALIZED
1	1	HDL E	1515EA	177888	FREE
1	1	HDL M	1515MA	187383	25.4 MM STAND-OFF

INSTRUMENT CONFIGURATION

Source File: /dal1a/paw/vuLibr2/dal-ldg

CABLEHEAD

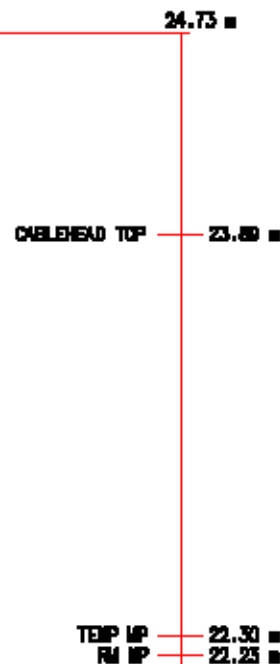
Series : CABL338
 Mnemonic : CABH
 Diameter : 8.6 cm
 Weight : 10.9 kg
 Length : 167.6 cm
 Measure Point: 83.8 cm: CABLEHEAD TOP

TTRM SUB

Series : 3881XA
 Mnemonic : TTRM
 Diameter : 9.2 cm
 Weight : 36.4 kg
 Length : 116.8 cm
 Measure Point: 42.2 cm: TEMP MP
 Measure Point: 34.6 cm: RM MP

ITS COMMON REMOTE

Series : 3514XA
 Mnemonic : ITS
 Diameter : 8.2 cm
 Weight : 65.5 kg



Length : 189.5 cm

DIGITAL SPECTRAL DG

Series : 13200A
Mnemonic : DSL
Diameter : 9.2 cm
Weight : 64.8 kg
Length : 222.5 cm
Measure Points : 48.8 cm GR MP

GR MP 18.25 m

ARMY ACUSTILLOS ELECTRONICS

Series : 1687EA
Mnemonic : DAC
Diameter : 8.6 cm
Weight : 61.8 kg
Length : 238.3 cm

4 ARM BOW SPRING CENTRALIZER

Series : 4341XA
Mnemonic : CENT
Diameter : 8.6 cm
Weight : 38.2 kg
Length : 125.5 cm

T1 MP 12.88 m

DIGITAL ACOUSTIC LOG

Series : 168DMA
Mnemonic : DAL
Diameter : 8.6 cm
Weight : 65.0 kg
Length : 305.9 cm
Measure Point: 242.3 cm: T1 MP
Measure Point: 181.4 cm: T2 MP
Measure Point: 89.9 cm: R1 MP

T2 MP — 12.05 m

R1 MP — 11.13 m

4 ARM BOW SPRING CENTRALIZER

Series : 4341XA
Mnemonic : CENT
Diameter : 8.6 cm
Weight : 39.2 kg
Length : 125.5 cm

KNUCKLE JOINT

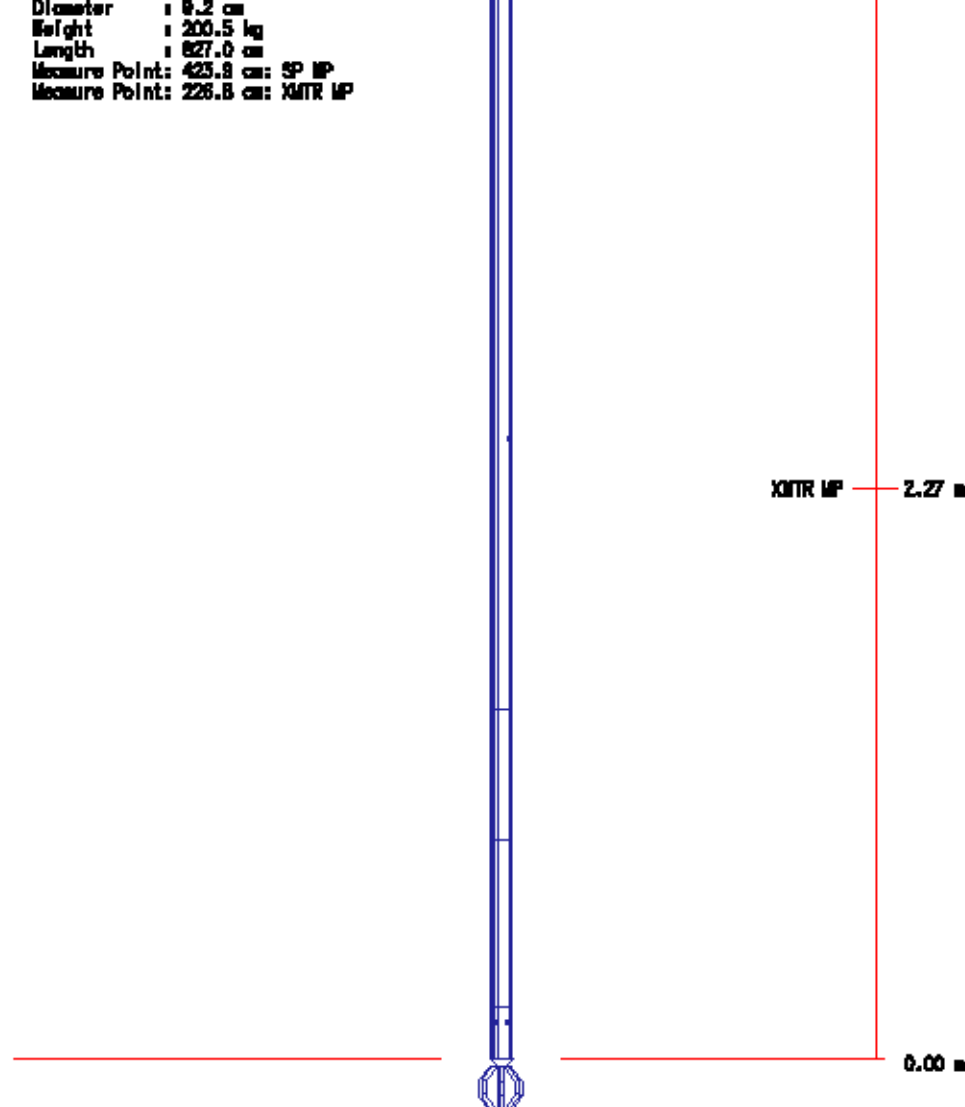
Series : 3923XA
Mnemonic : KJUT
Diameter : 8.6 cm
Weight : 21.8 kg
Length : 70.8 cm

HIGH DEFINITION INDUCTION TOOL

Series : 1513XA
Mnemonic : HDIL

SP MP — 4.24 m

Diameter : 8.2 cm
 Weight : 200.5 kg
 Length : 827.0 cm
 Measure Point: 423.8 cm: SP MP
 Measure Point: 226.8 cm: XMTR MP



TOTAL LENGTH: 24.83 m
 TOTAL WEIGHT: 805.5 kg
 MAX DIAMETER: 16.2 cm

MAIN LOG - UPPER PRESENTATION

ECLIPS 5.01 Dec 17, 2003
 Updates: 1,2,3,32

Perpht /main/59

Cplot 7.09
 Pdf_Cpp /main/16

Tue Nov 22 12:21:11 2005
 Fileview 4.67

PARAMETER AND FILTER SUMMARY REPORT

FILE: /dot1a/pasa/vul_hrc2/1777.Jd03.prm
 LOGGING MODE: DEPTH DIRECTION: UP
 TOP DEPTH: 293.085 m BOTTOM DEPTH: 931.184 m

SYMMETRIC FILTER

MEASUREMENT TYPE	PARAMETER	VALUE	UNITS	INTERVAL (m)	
Y AXIS CALIPER	FILTER ()	light (2)		TOP	BOTTOM
TENSION	FILTER ()	medium (1)		"	"
GR	FILTER ()	medium (1)		"	"
DT24	FILTER ()	medium (1)		"	"

BOREHOLE & CEMENT

MEASUREMENT TYPE	PARAMETER	VALUE	UNITS	INTERVAL (m)	
CASING - BOREHOLE & CEMENT VOLUME	CASING O.D.	114.300	mm	TOP	BOTTOM
BIT SIZE	BIT SIZE	158.000	mm	''	''

ACOUSTIC AVAN CORRELATION

MEASUREMENT TYPE	PARAMETER	VALUE	UNITS	INTERVAL (m)	
MONOPOLE DELTA T	FORMATION TYPE	FAST		TOP	BOTTOM
	CORRELATION METHOD	SEMBLANCE		''	''
	RESET TAPERS			''	''
	TAPER - LEFT END	131	US/M	''	''
	TAPER - RIGHT END	458	US/M	''	''
	CORRELATION FLOOR	0.200		''	''

ACOUSTIC POROSITY

MEASUREMENT TYPE	PARAMETER	VALUE	UNITS	INTERVAL (m)	
DELTA T CURVE SELECTION	DT24 SOURCE	AVAN DT24		TOP	BOTTOM

CURVE DESCRIPTION REPORT

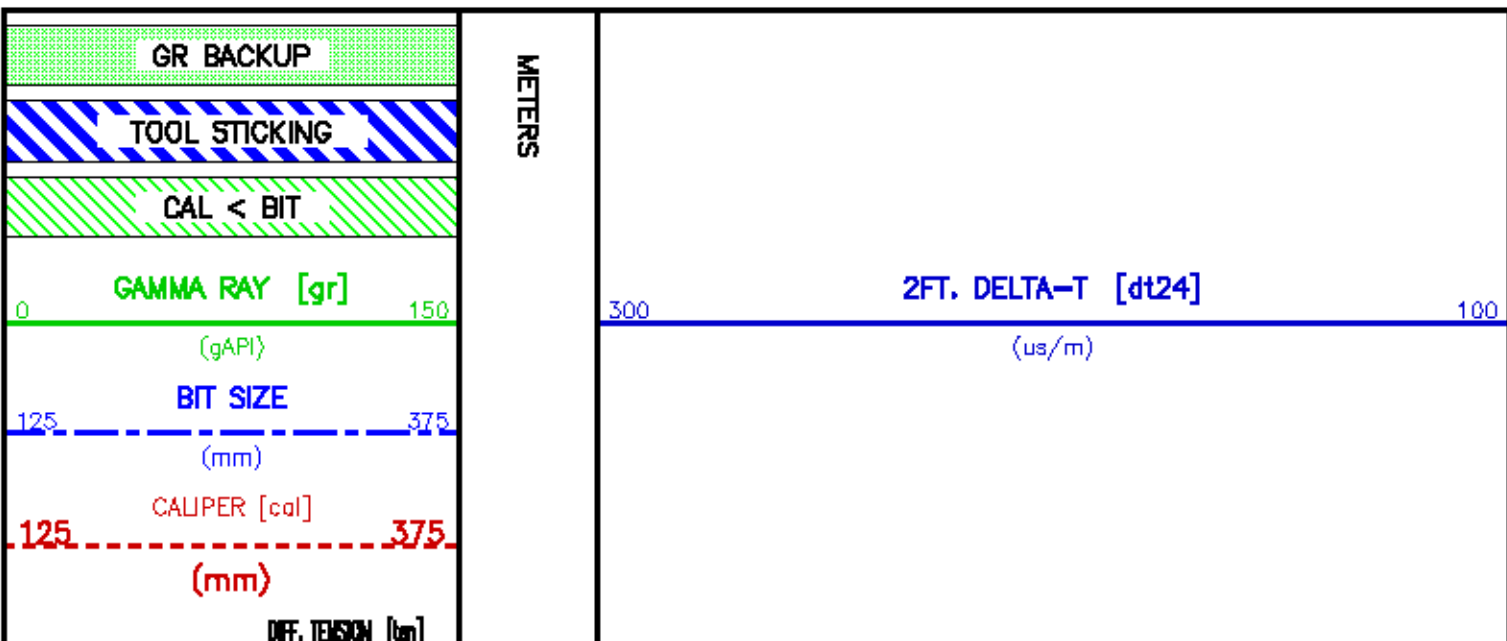
CURVE NAME	CURVE ALIAS	CREATION DATE	CURVE DESCRIPTION
F1:BIT	BIT	Nov 22 07:13:14 2005	BIT SIZE
F1:BVOL	BVOL	Nov 22 07:13:14 2005	BOREHOLE VOLUME
F1:CAL	CAL	Nov 22 07:13:14 2005	CALIPER
F1:DT24	DT24	Nov 22 07:13:14 2005	INTERVAL TRANSIT TIME OVER 24 INCH INTERVAL
F1:GR	GR	Nov 22 07:13:14 2005	GAMMA RAY
F1:MMRK	MMRK	Nov 22 07:13:14 2005	MINUTE MARK
F1:TEN	TEN	Nov 22 07:13:14 2005	DIFFERENTIAL TENSION
F1:TT	TT	Nov 22 07:13:14 2005	INTEGRATED TRAVEL TIME FROM ACOUSTIC DELTA-T
F1:WTBH		Nov 22 07:13:14 2005	TEMPERATURE OF THE BOREHOLE

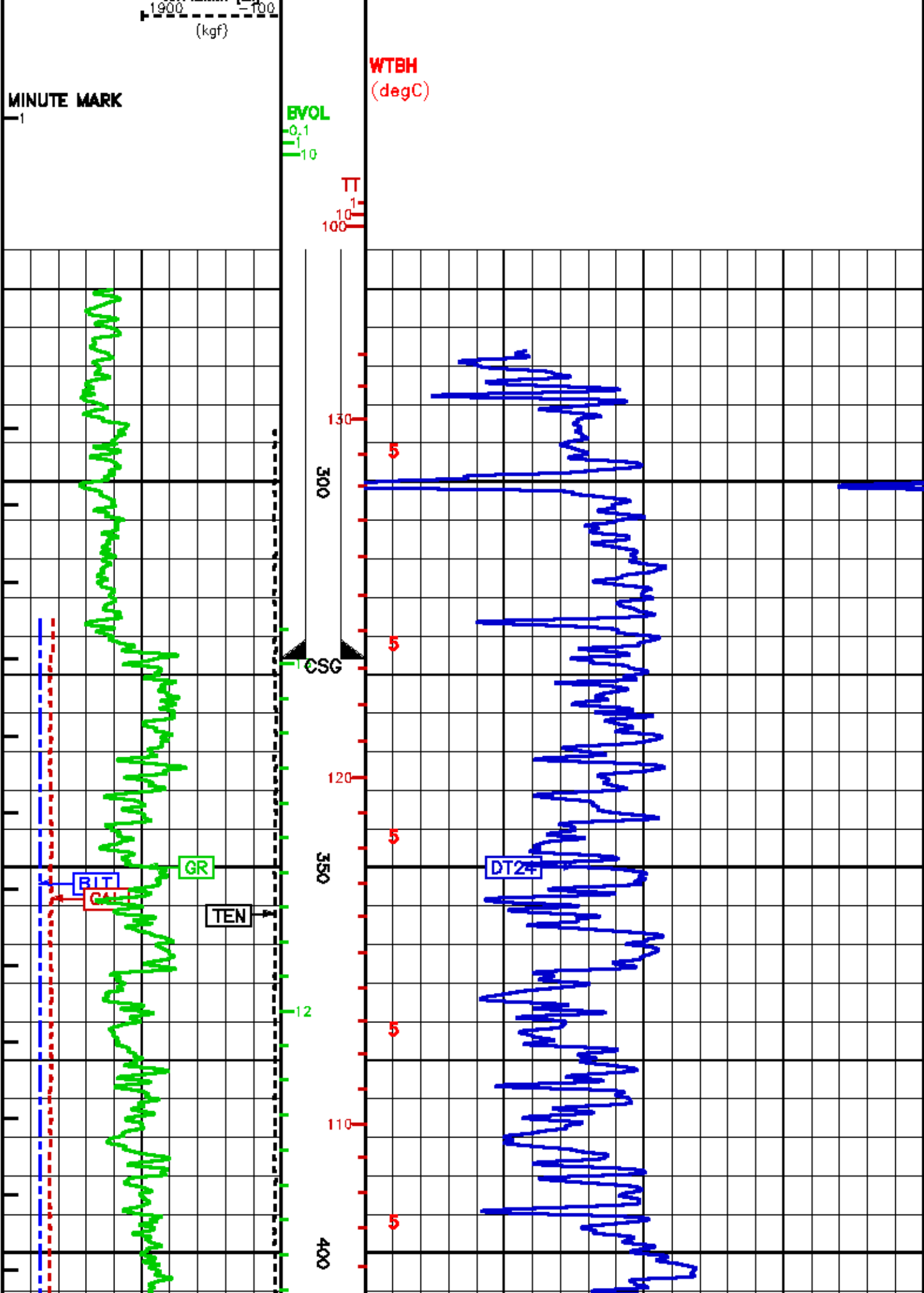
CURVE MEASURE POINT OFFSET

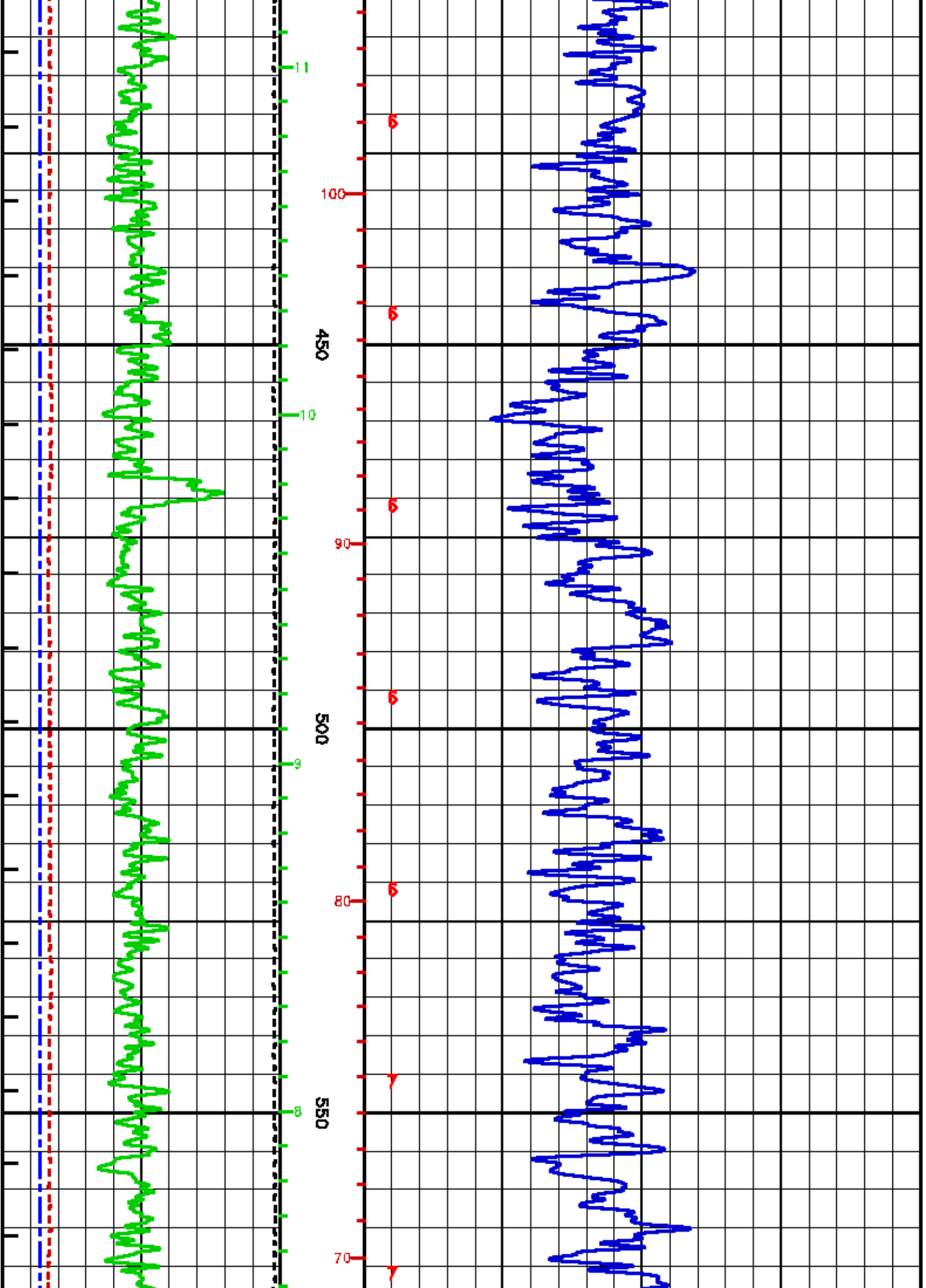
CURVE	OFFSET (m)	CURVE	OFFSET (m)	CURVE	OFFSET (m)	CURVE	OFFSET (m)
BIT	0.00	DT24	10.90	TEN	0.00		
CAL	0.00	GR	18.21				

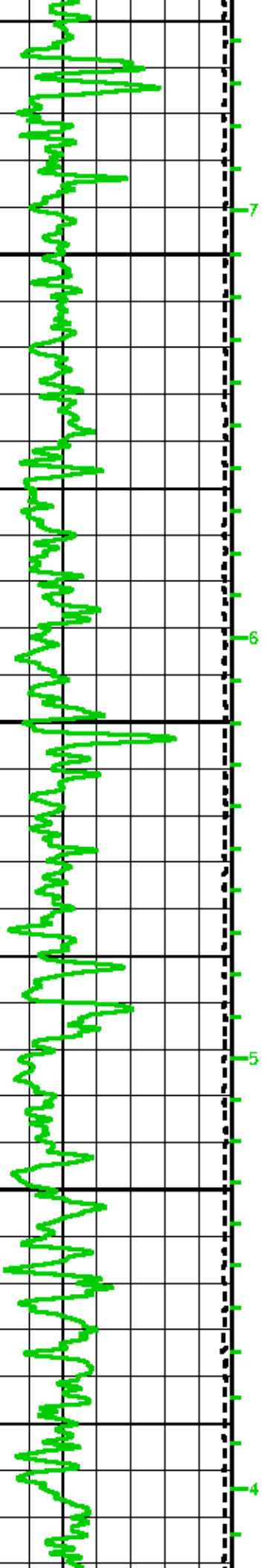
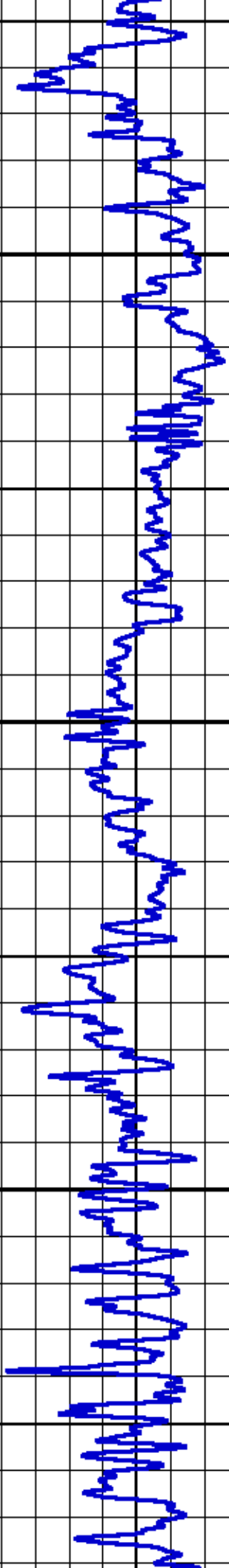
Presentation : c:\p1\dat1a\pasm\val_hrc2\dal_upper.pdf [1:800 Scale]
Plot Interval : 270.987 - 933 Meters

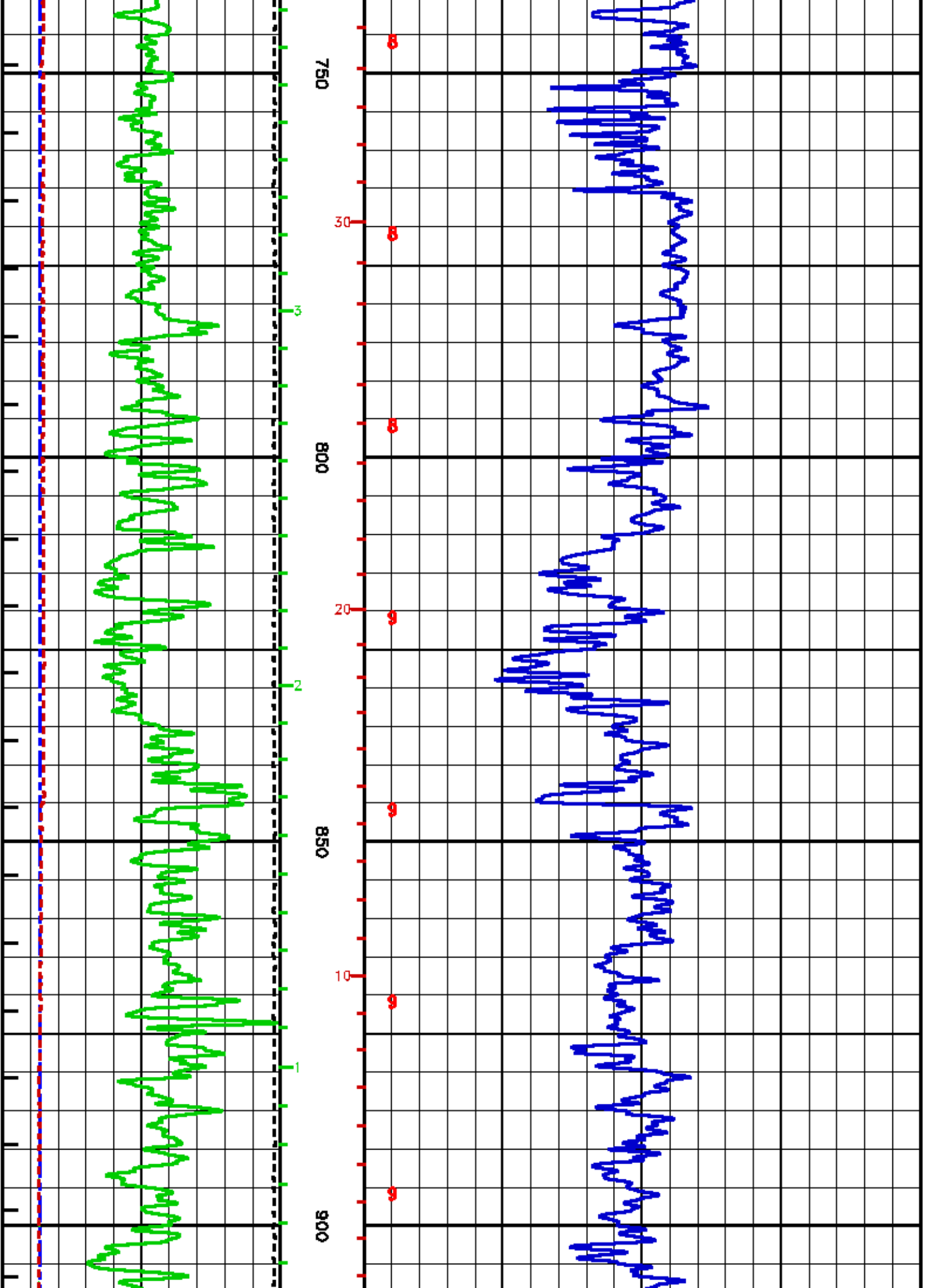
Data File 1 : F1 : c:\p1\dat1a\pasm\val_hrc2\1777.h03.xtf
Created On : Nov 22 07:13:14 2005
Company : VULCAN MINERALS INC.
Well : HURRICANE #2 (NHIP #1)
Field : BAY ST. GEORGE
File Interval : 270.987 - 931.164 Meters
Del : 1777.hc

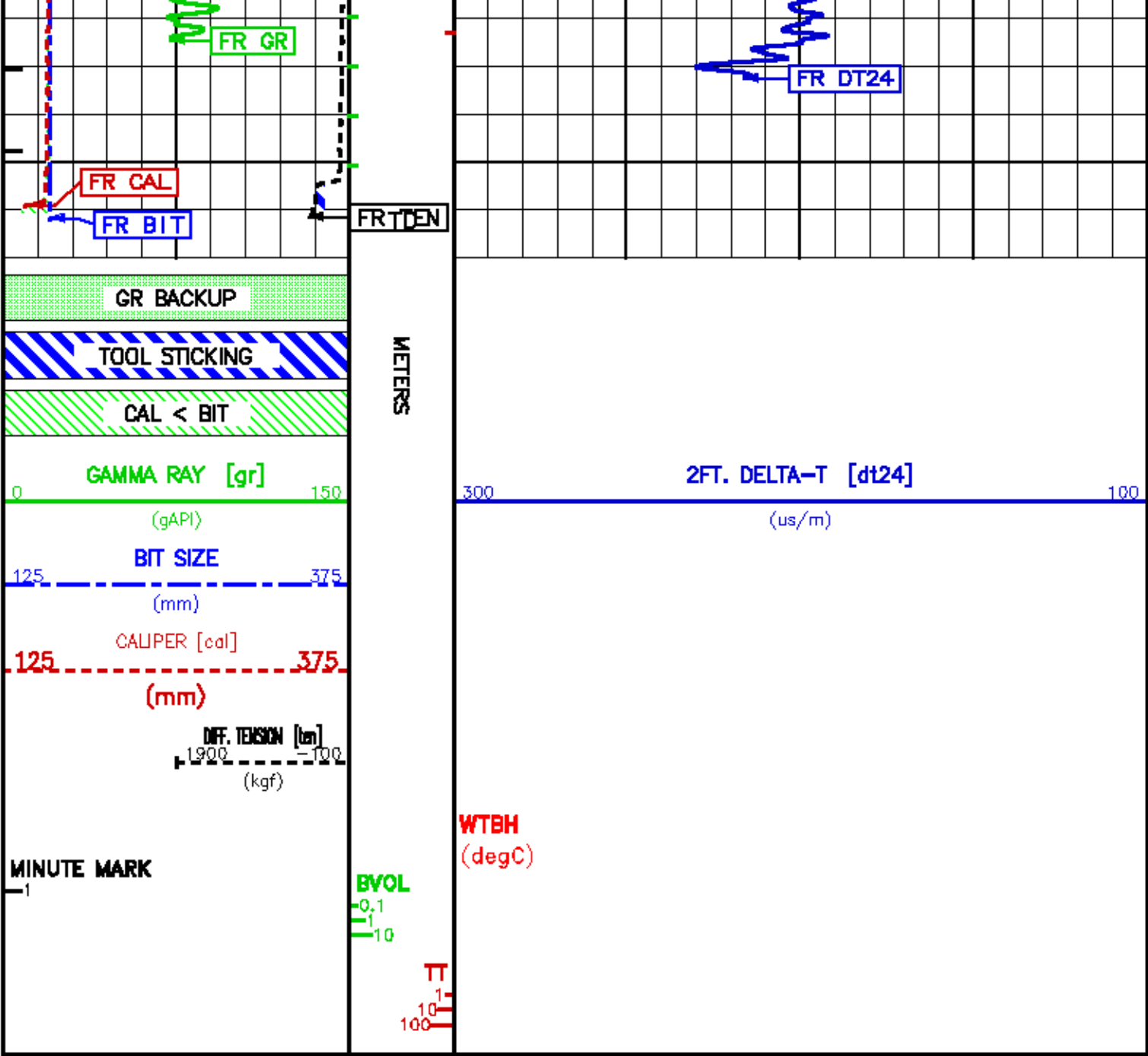












MAIN LOG

ECLIPS 5.01 Dec 17, 2003
Updates: 1,2,3,32
Perplot /main/59
Cplot 7.09
Pdf_Cpp /main/16
Tue Nov 22 12:20:59 2005
Fileview 4.67

PARAMETER AND FILTER SUMMARY REPORT

FILE: /data/pasa/vul_hra2/1777.h03.prm
LOGGING MODE: DEPTH
TOP DEPTH: 293.085 m
DIRECTION: UP
BOTTOM DEPTH: 931.184 m

SYMMETRIC FILTER

MEASUREMENT TYPE	PARAMETER	VALUE	UNITS	INTERVAL (m)
Y AXIS CALIPER	FILTER ()	11ght (2)		TOP BOTTOM

TENSION	FILTER ()	medium (1)
OR	FILTER ()	medium (1)
DT24	FILTER ()	medium (1)

BOREHOLE & CEMENT

MEASUREMENT TYPE	PARAMETER	VALUE	UNITS	INTERVAL (m)	
CASING - BOREHOLE & CEMENT VOLUME	CASING O.D.	114.300	mm	TOP	BOTTOM
BIT SIZE	BIT SIZE	159.000	mm

ACOUSTIC AVAN CORRELATION

MEASUREMENT TYPE	PARAMETER	VALUE	UNITS	INTERVAL (m)	
MONOPOLE DELTA T	FORMATION TYPE	FAST		TOP	BOTTOM
	CORRELATION METHOD	SEMBLANCE	
	RESET TAPERS		
	TAPER - LEFT END	131	us/m
	TAPER - RIGHT END	458	us/m
	CORRELATION FLOOR	0.200	

ACOUSTIC POROSITY

MEASUREMENT TYPE	PARAMETER	VALUE	UNITS	INTERVAL (m)	
DELTA T CURVE SELECTION	DT24 SOURCE	AVAN DT24		TOP	BOTTOM

ACOUSTIC PICK CONTROL

MEASUREMENT TYPE	PARAMETER	VALUE	UNITS	INTERVAL (m)	
FIRST ARRIVAL PICK (5 FT)	SEARCH START OFFSET {sfa11°}	0	us	TOP	BOTTOM
	SEARCH START OFFSET {sfa12°}	0	us
	SEARCH START OFFSET {sfa13°}	0	us
	SEARCH START OFFSET {sfa14°}	0	us
	SEARCH WINDOW LENGTH	500	us
	THRESHOLD FACTOR	0.30	
	THRESHOLD MINIMUM {sfa11°}	1.8	pot
	THRESHOLD MINIMUM {sfa12°}	1.8	pot
	THRESHOLD MINIMUM {sfa13°}	1.8	pot
	THRESHOLD MINIMUM {sfa14°}	1.8	pot
	ES THRESHOLD	OFF	

ACOUSTIC QUALITY CONTROL

MEASUREMENT TYPE	PARAMETER	VALUE	UNITS	INTERVAL (m)	
CYCLE SKIP LIMIT	CYCLE SKIP LIMIT	100	us	TOP	BOTTOM

ACOUSTIC WAVEFORM FILTER

MEASUREMENT TYPE	PARAMETER	VALUE	UNITS	INTERVAL (m)	
WAVEFORM FILTER - DELTA T	SURFACE WAVE FILTER	ON		TOP	BOTTOM
	LOW FREQ CUTOFF	7000	Hz
	HIGH FREQ CUTOFF	30000	Hz

CURVE DESCRIPTION REPORT

CURVE NAME	CURVE ALIAS	CREATION DATE	CURVE DESCRIPTION	
F1:BIT	BIT	Nov 22 07:13:14 2005	BIT SIZE	
F1:BVOL	BVOL	Nov 22 07:13:14 2005	BOREHOLE VOLUME	
F1:CAL	CAL	Nov 22 07:13:14 2005	CALIPER	
F1:DT24	DT24	Nov 22 07:13:14 2005	INTERVAL TRANSIT TIME OVER 24 INCH INTERVAL	
F1:GR	GR	Nov 22 07:13:14 2005	GAMMA RAY	
F1:MMRK	MMRK	Nov 22 07:13:14 2005	MINUTE MARK	
F1:SFA11	SFA11	Nov 22 07:13:14 2005	SURFACE PICK FIRST ARRIVAL TIME, T1R1	
F1:SFA12	SFA12	Nov 22 07:13:14 2005	SURFACE PICK FIRST ARRIVAL TIME, T1R2	
F1:SFA13	SFA13	Nov 22 07:13:14 2005	SURFACE PICK FIRST ARRIVAL TIME, T1R3	
F1:SFA14	SFA14	Nov 22 07:13:14 2005	SURFACE PICK FIRST ARRIVAL TIME, T1R4	
F1:TEN	TEN	Nov 22 07:13:14 2005	DIFFERENTIAL TENSION	
F1:TT	TT	Nov 22 07:13:14 2005	INTEGRATED TRAVEL TIME FROM ACOUSTIC DELTA-T	
F1:WTBH		Nov 22 07:13:14 2005	TEMPERATURE OF THE BOREHOLE	

CURVE MEASURE POINT OFFSET

CURVE	OFFSET (m)	CURVE	OFFSET (m)	CURVE	OFFSET (m)	CURVE	OFFSET (m)
-------	------------	-------	------------	-------	------------	-------	------------

BIT	0.00	GR	18.21	SFA13	11.73
GAL	0.00	SFA11	11.89	SFA14	11.66
DT24	10.90	SFA12	11.81	TEN	0.00

```

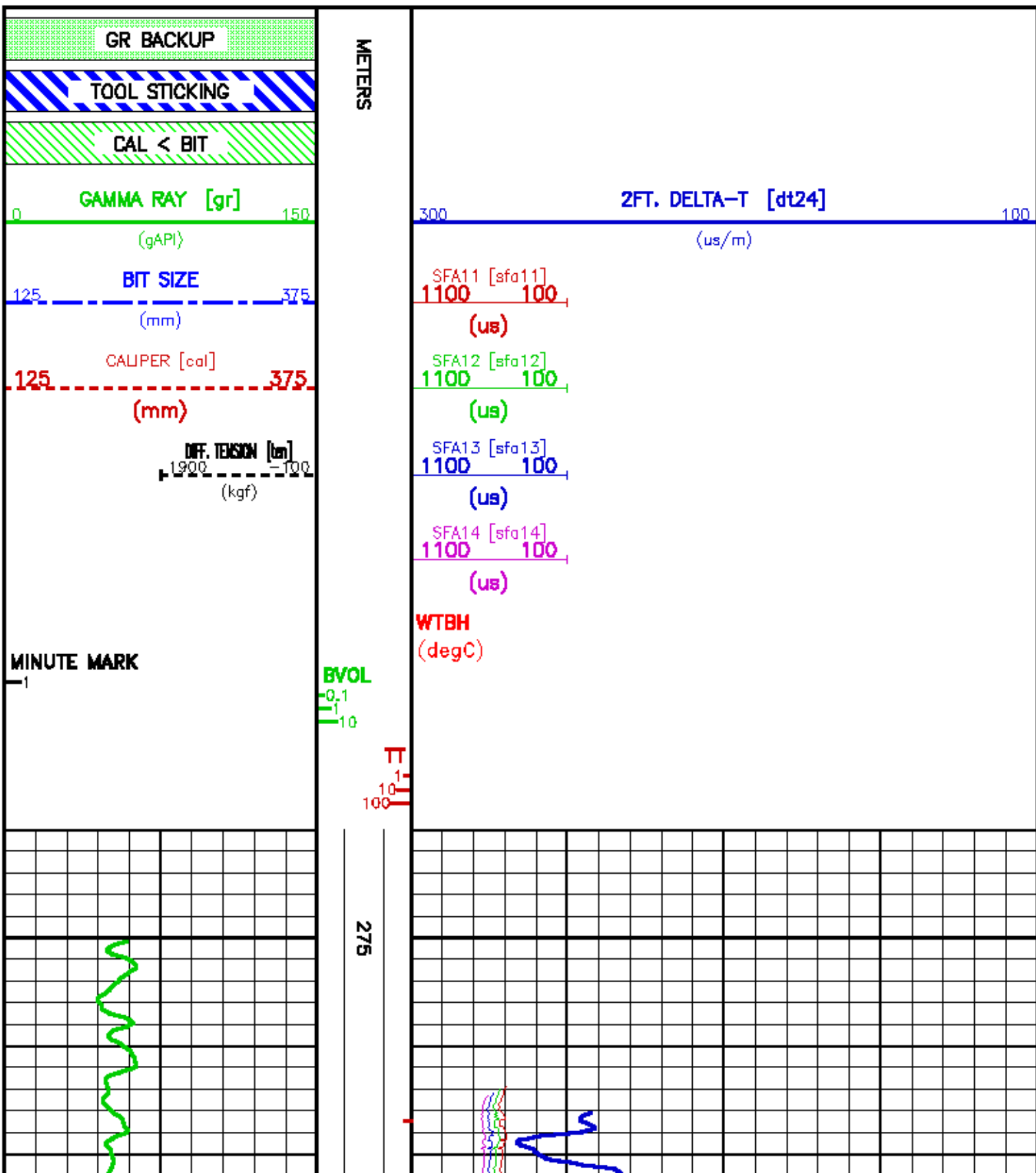
Presentation : opuf:/data/pase/vul_hrs2/dal_main.pdf [1240 Scale]
Plot interval : 270.987 - 953 Meters

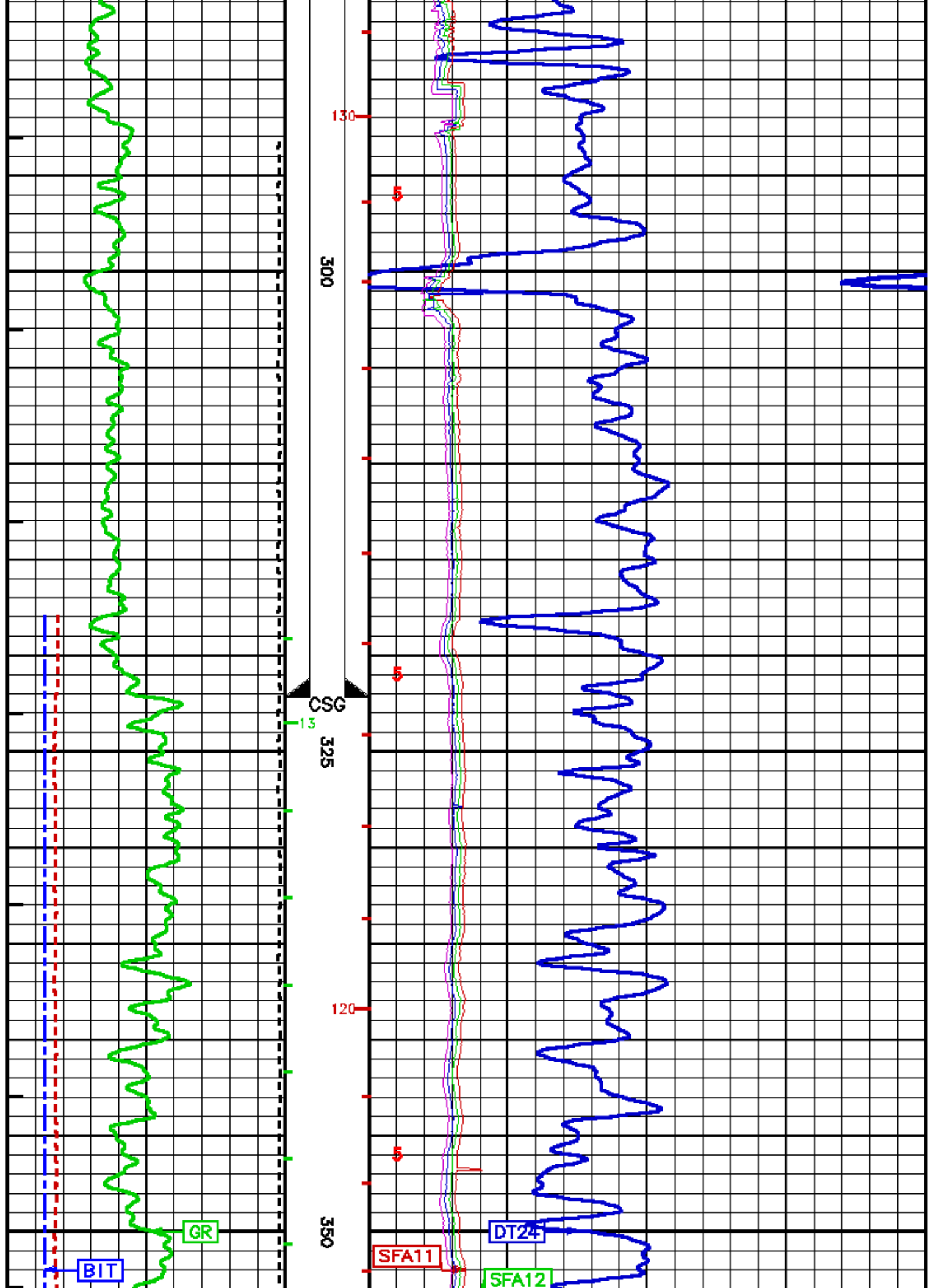
```

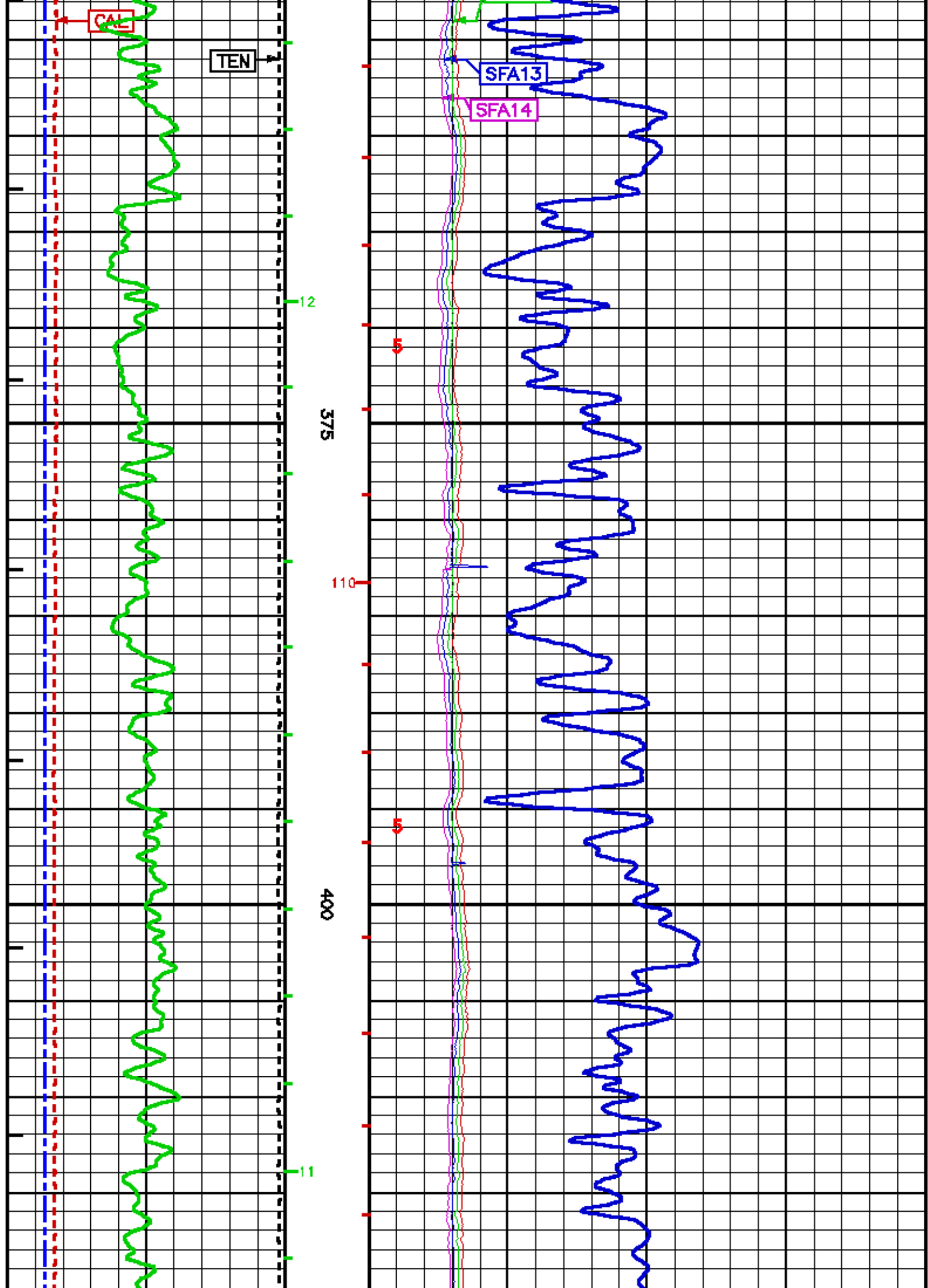
```

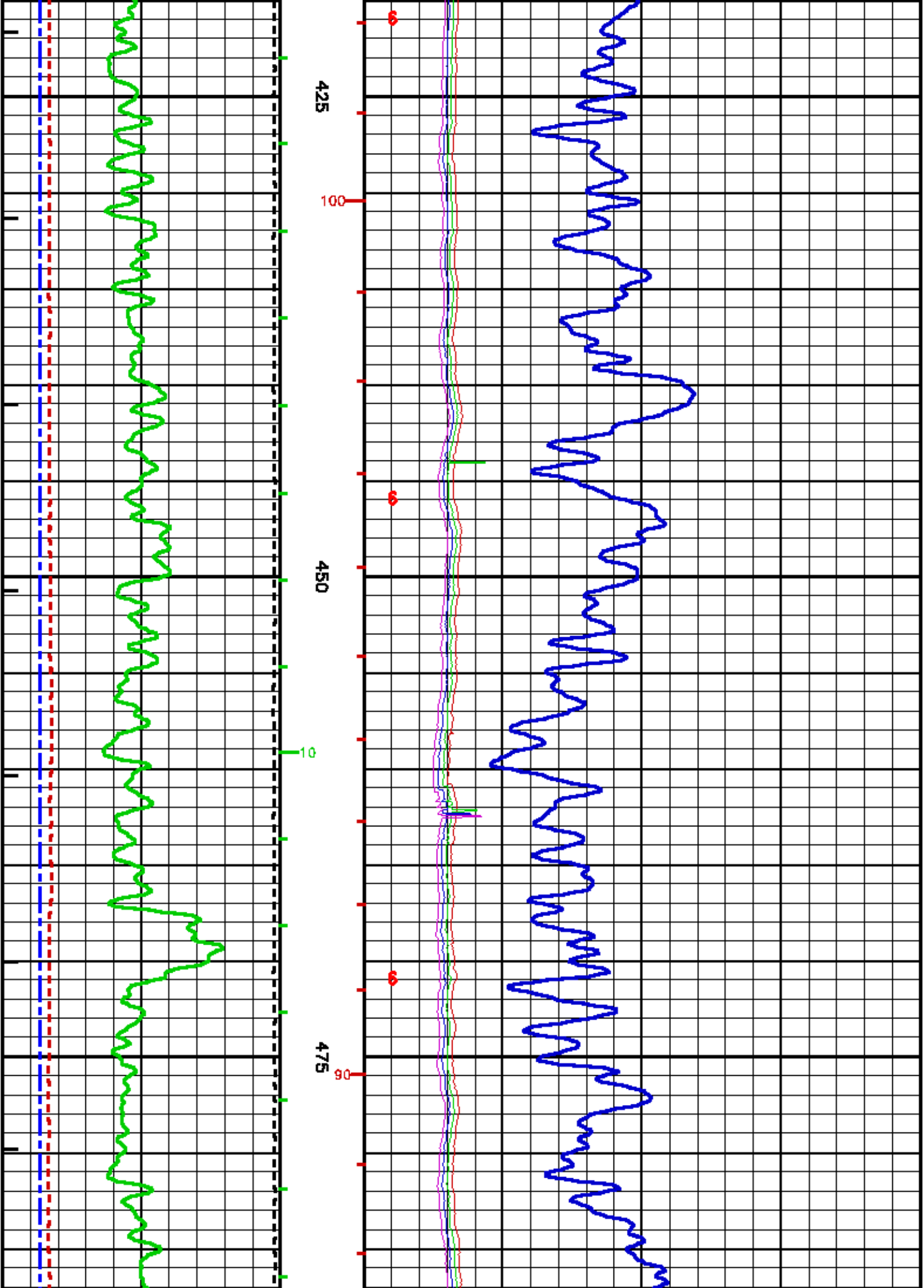
Data File 1      : F1 : epu1\data\pasa\vol_hrs2\1777.hrs2.txt
Created On       : Nov 22 07:13:14 2005
Company          : VULCAN MINERALS INC.
Well             : HURRICANE #2 (WHIP #1)
Field            : BAY ST. GEORGE
File Interval    : 270.967 - 931.164 Meters
Out              : 1777.bx

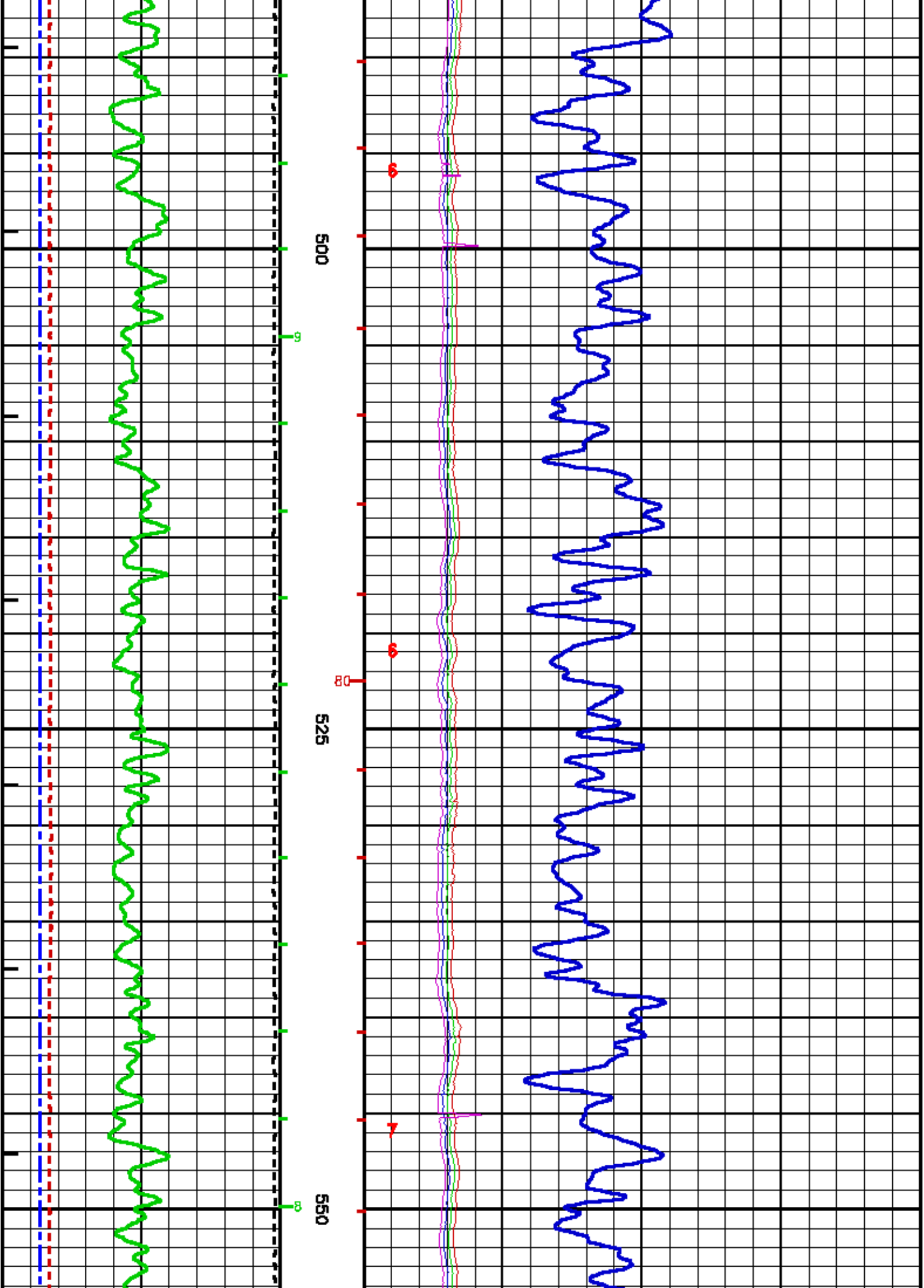
```

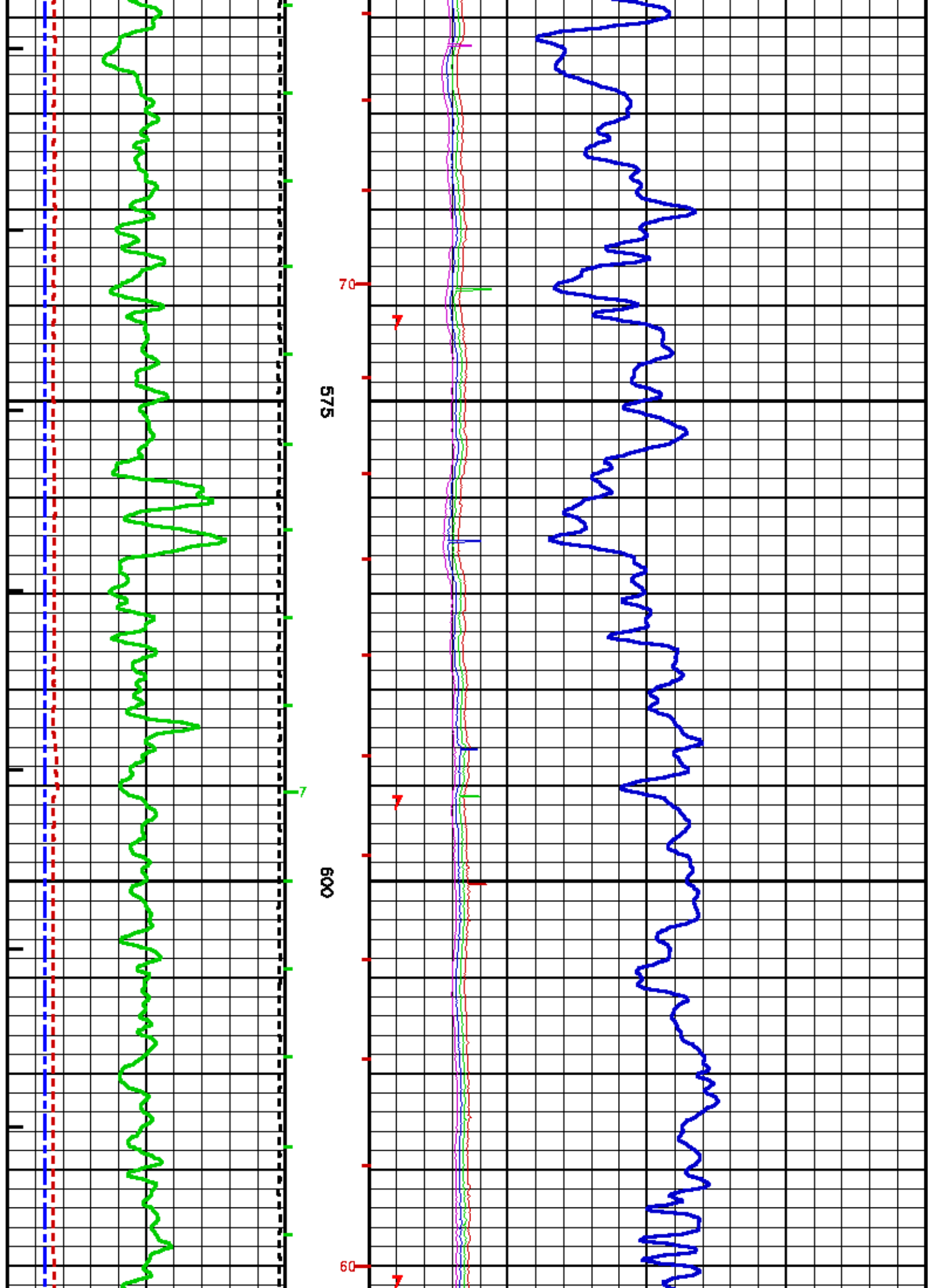


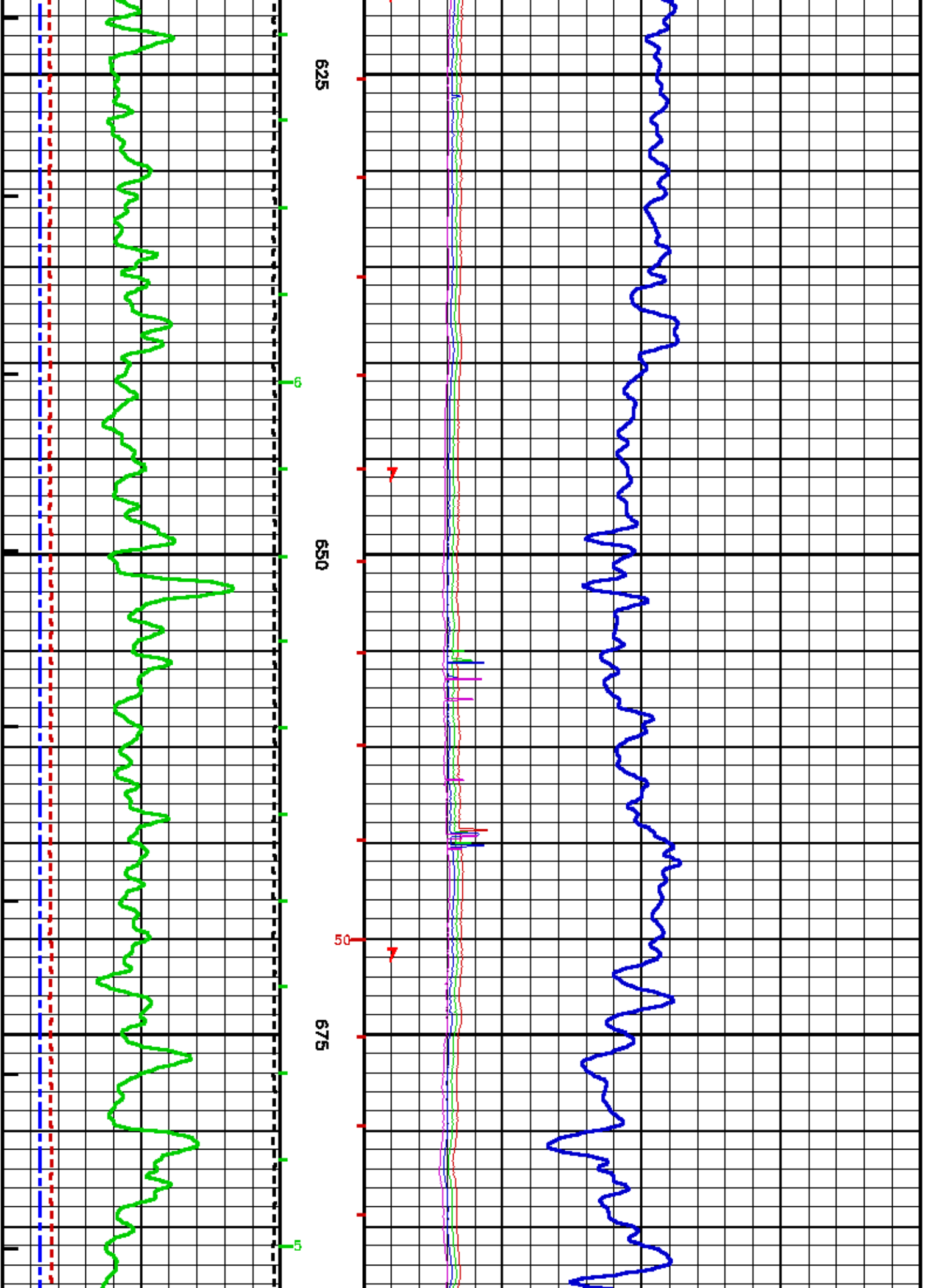


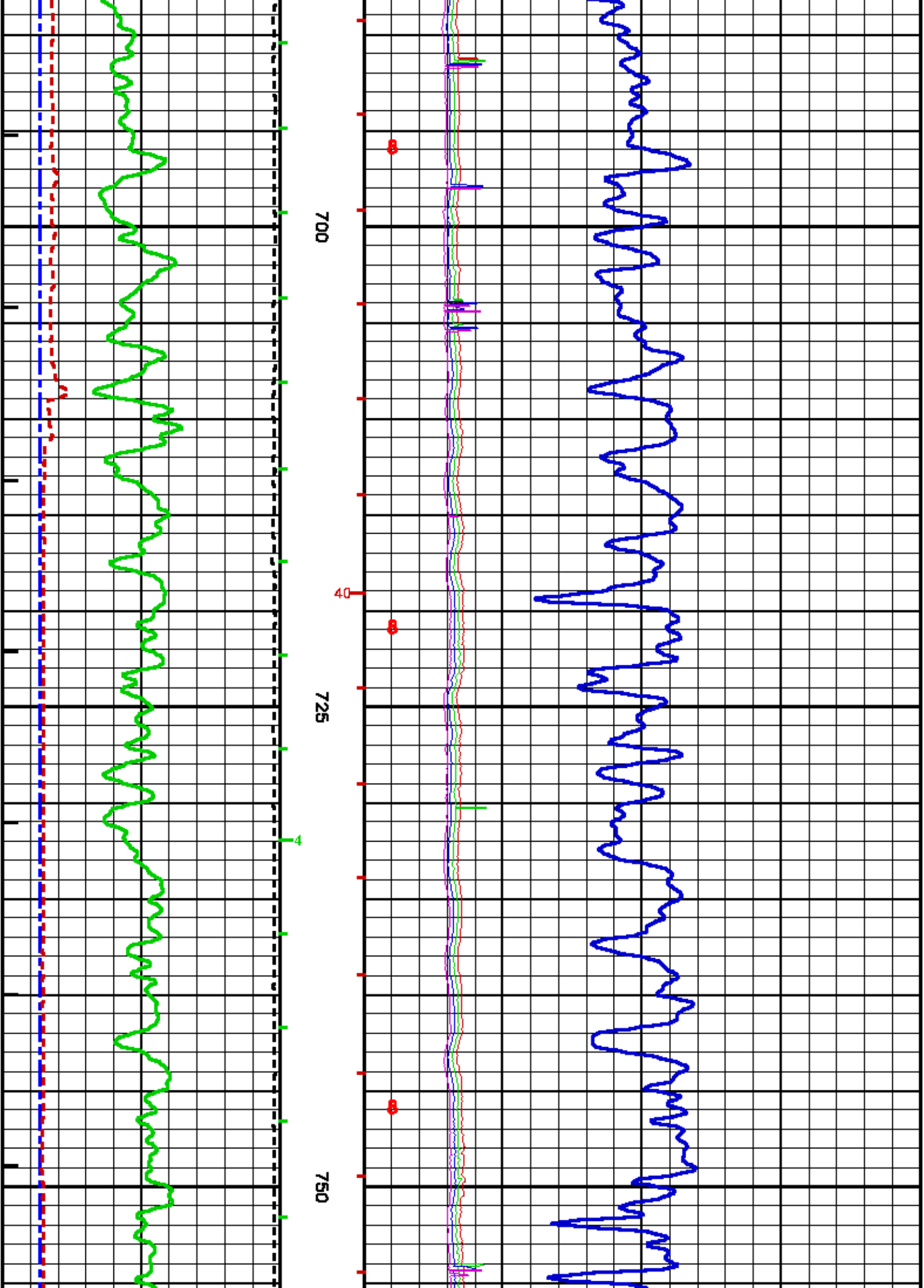


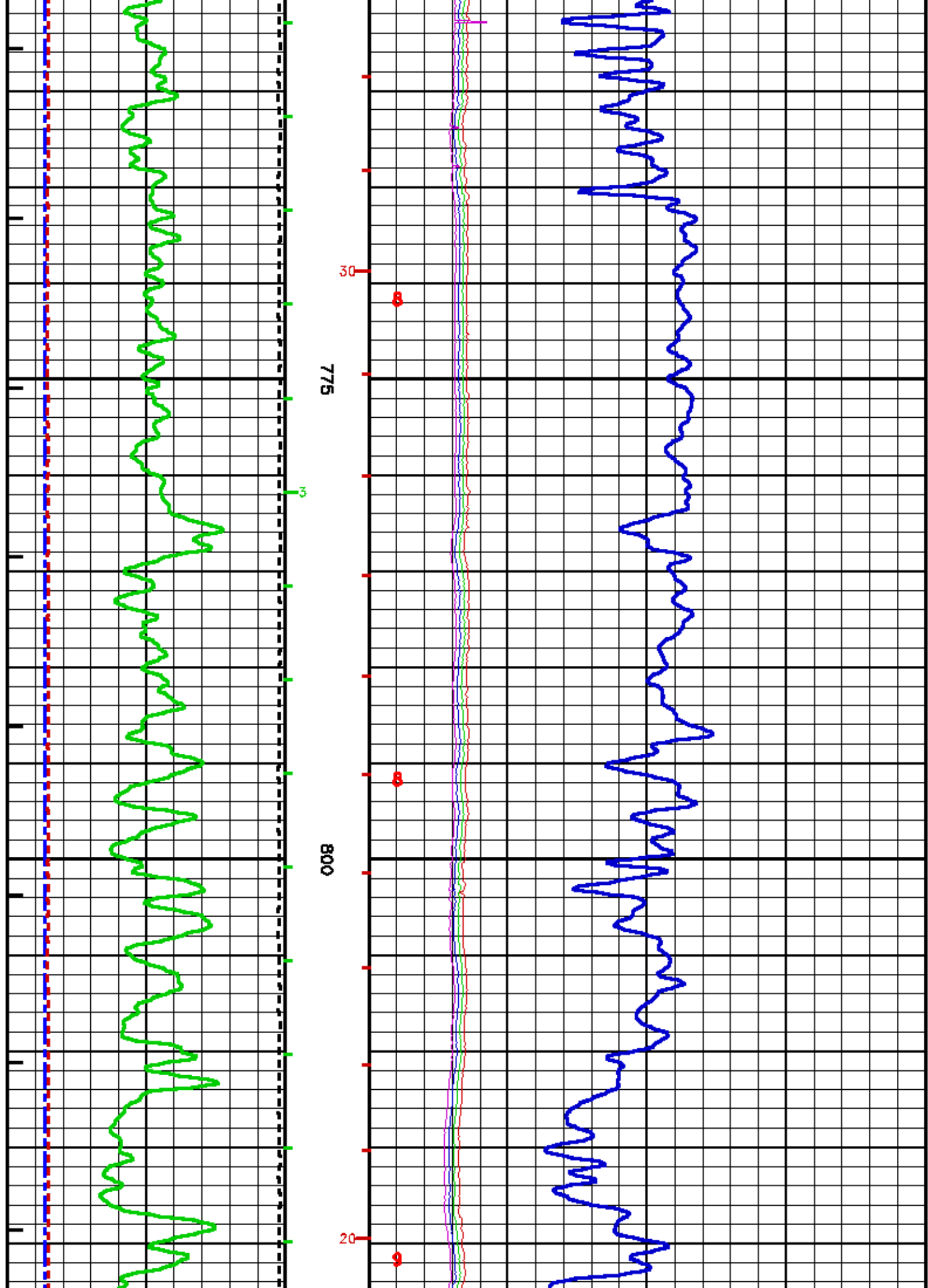


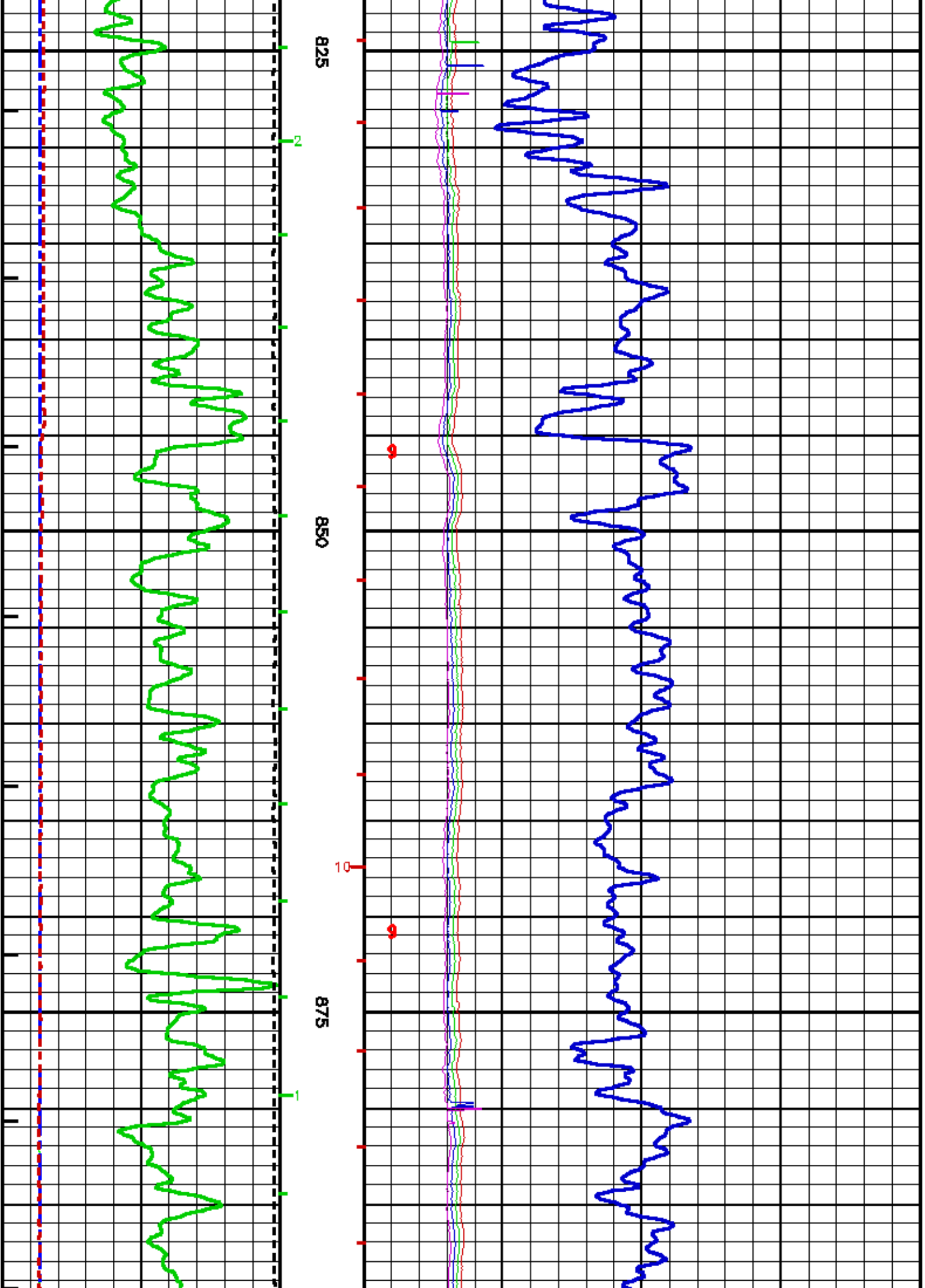


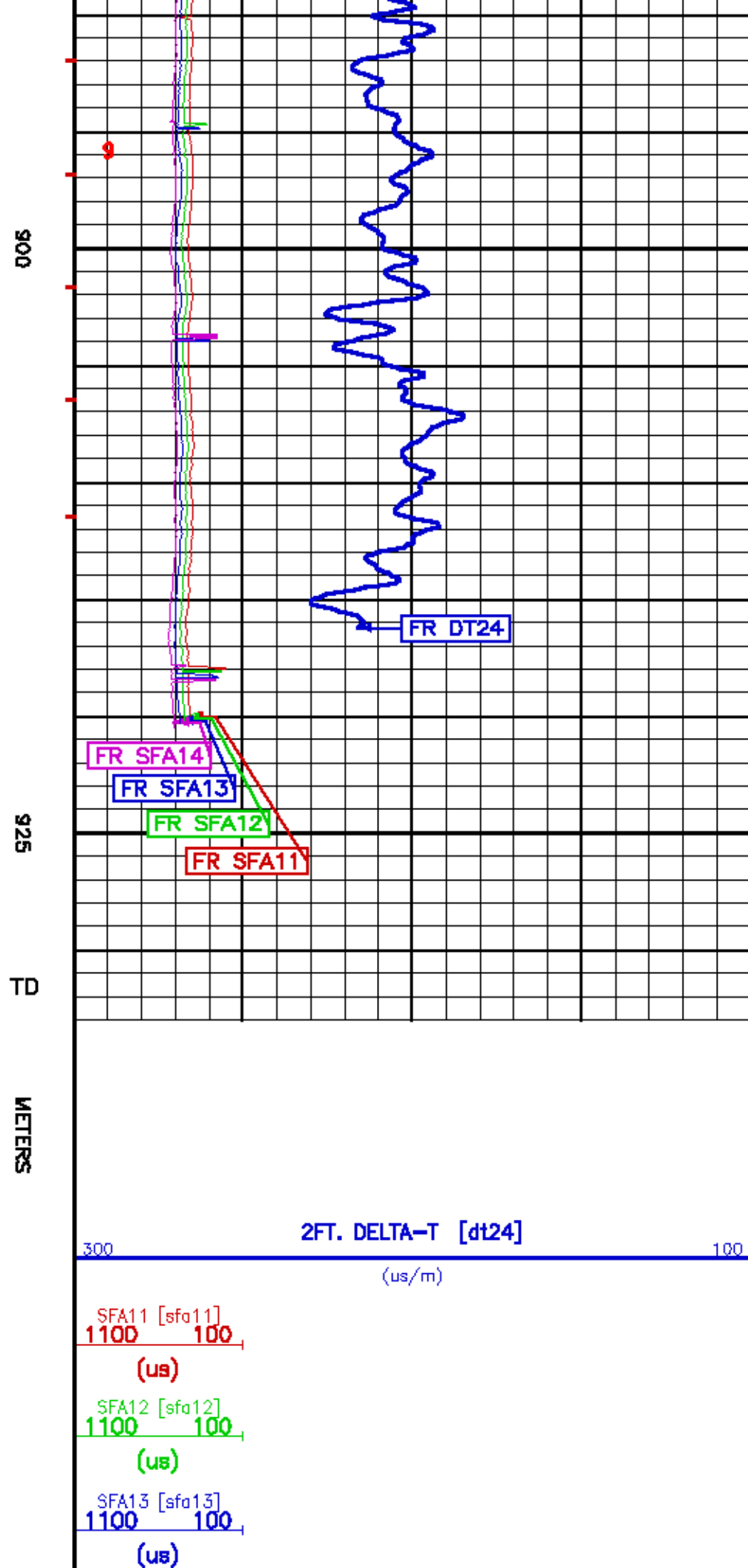
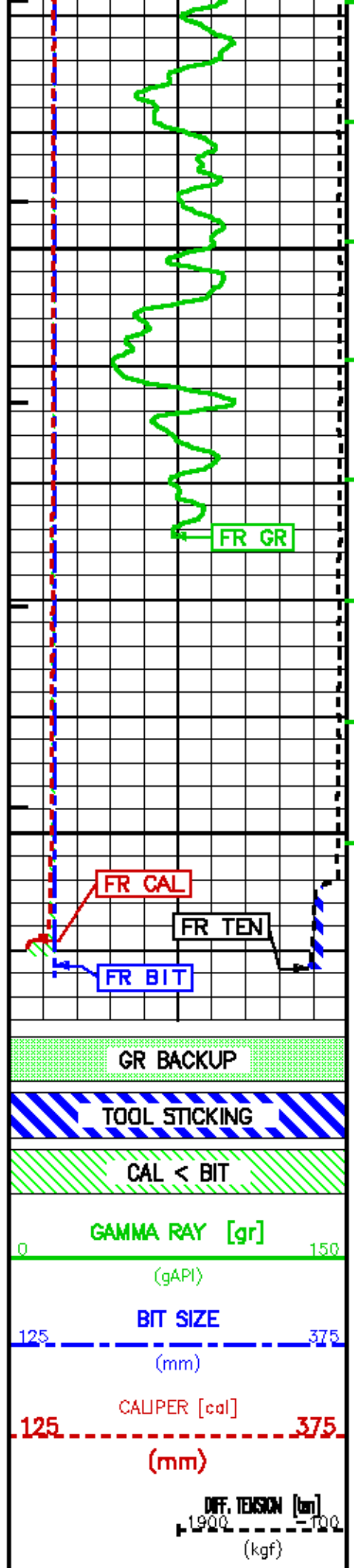


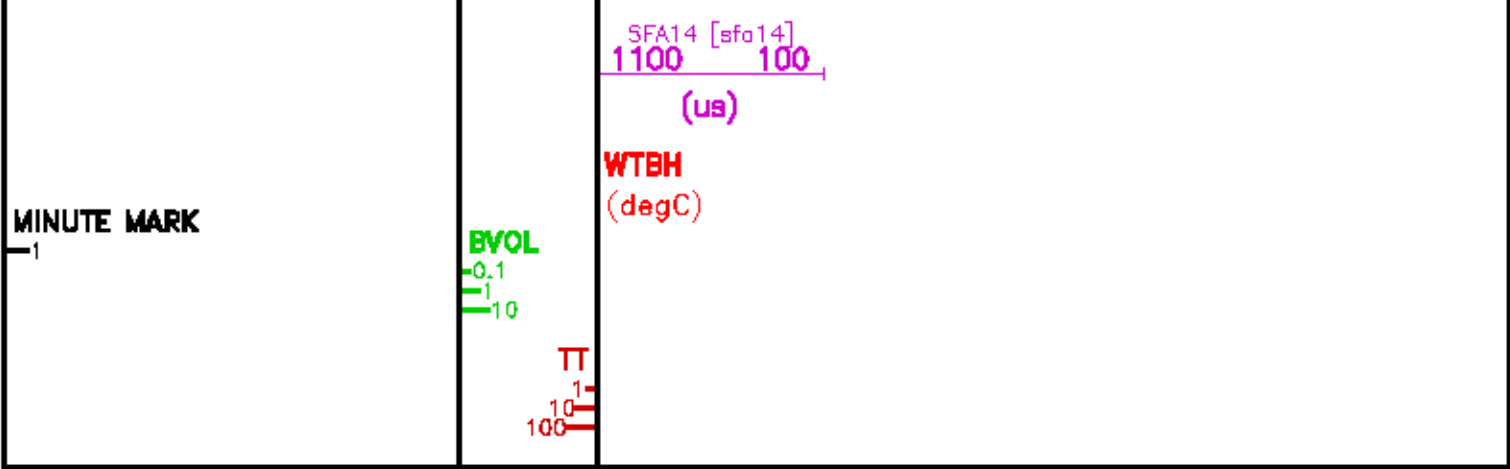












REPEAT LOG

ECLIPS 5.01 Dec 17, 2003
Updates: 1,2,3,32

Perpht /main/59

Cplot 7.09
Pdf_Cpp /main/16

Tue Nov 22 10:45:30 2005
Fileview 4.67

PARAMETER AND FILTER SUMMARY REPORT

FILE: /data/pasa/vul_hrc2/1777.hrd2.prm
LOGGING MODE: DEPTH DIRECTION: UP
TOP DEPTH: 836.828 m BOTTOM DEPTH: 932.993 m

SYMMETRIC FILTER

MEASUREMENT TYPE	PARAMETER	VALUE	UNITS	INTERVAL (m)	
Y AXIS CALIPER	FILTER ()	light (2)		TOP	BOTTOM
TENSION	FILTER ()	medium (1)		"	"
GR	FILTER ()	medium (1)		"	"
DT24	FILTER ()	medium (1)		"	"

BOREHOLE & CEMENT

MEASUREMENT TYPE	PARAMETER	VALUE	UNITS	INTERVAL (m)	
CASING - BOREHOLE & CEMENT VOLUME	CASING O.D.	114.300	mm	TOP	BOTTOM
BIT SIZE	BIT SIZE	159.000	mm	"	"

ACOUSTIC AVAN CORRELATION

MEASUREMENT TYPE	PARAMETER	VALUE	UNITS	INTERVAL (m)	
MONOPOLE DELTA T	FORMATION TYPE	FAST		TOP	BOTTOM
	CORRELATION METHOD	SEMBLANCE		"	"
	RESET TAPERS			"	"
	TAPER - LEFT END	131	us/m	"	"
	TAPER - RIGHT END	459	us/m	"	"
	CORRELATION FLOOR	0.200		"	"

ACOUSTIC POROSITY

MEASUREMENT TYPE	PARAMETER	VALUE	UNITS	INTERVAL (m)	
DELTA T CURVE SELECTION	DT24 SOURCE	AVAN DT24		TOP	BOTTOM

CURVE DESCRIPTION REPORT

CURVE NAME	CURVE ALIAS	CREATION DATE	CURVE DESCRIPTION
F1:BIT	BIT	Nov 22 06:53:14 2005	BIT SIZE
F1:BVOL	BVOL	Nov 22 06:53:14 2005	BOREHOLE VOLUME
F1:DT24	DT24	Nov 22 06:53:14 2005	DT24

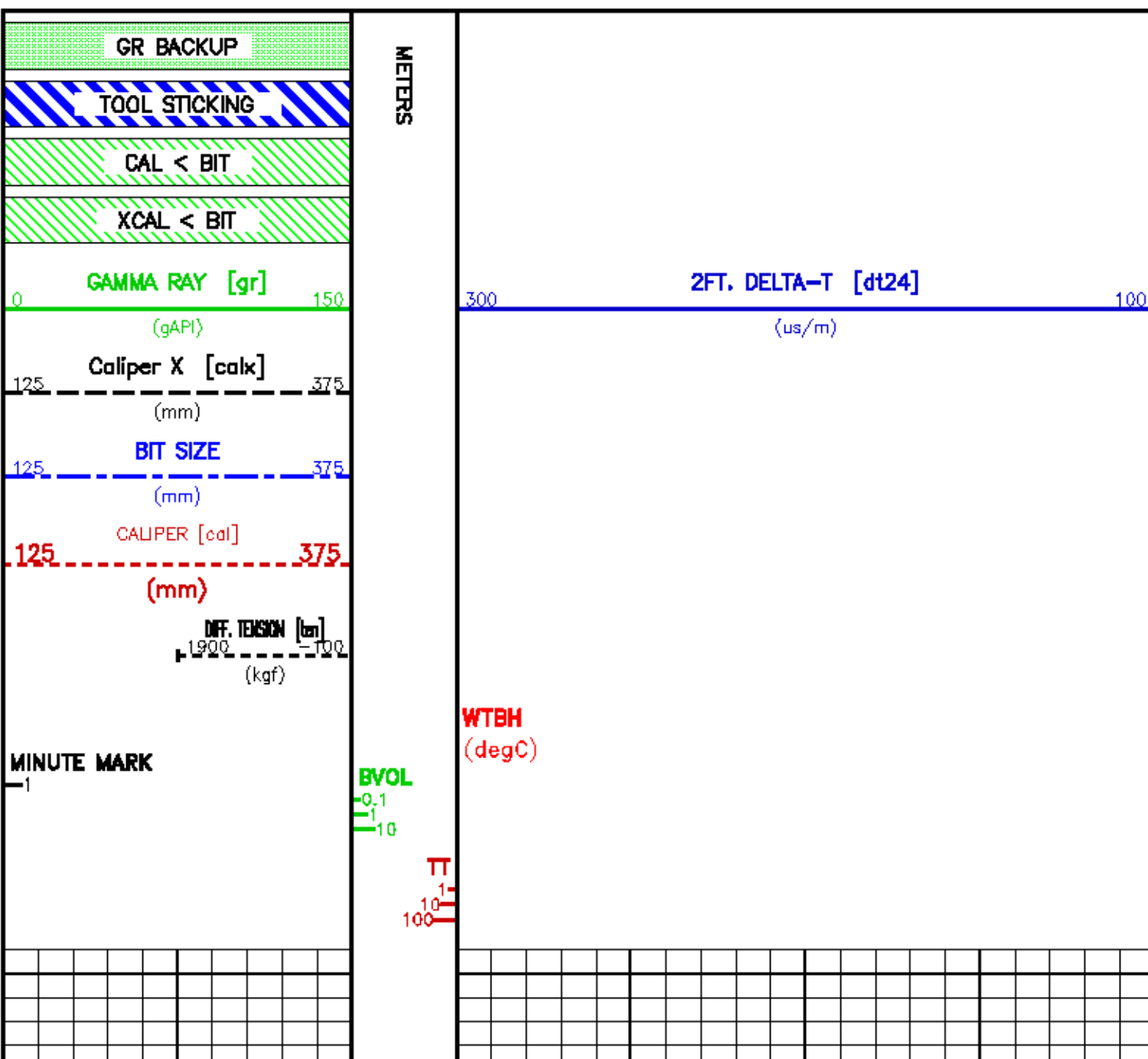
F1:CAL	CAL	Nov 22 06:53:14 2005	CALIPER
F1:CALX	CALX	Nov 22 10:18:46 2005	CALIPER FROM X AXIS OF X-Y CALIPER(S)
F1:DT24	DT24	Nov 22 06:53:14 2005	INTERVAL TRANSIT TIME OVER 24 INCH INTERVAL
F1:GR	GR	Nov 22 06:53:14 2005	GAMMA RAY
F1:MMRK	MMRK	Nov 22 06:53:14 2005	MINUTE MARK
F1:TEN	TEN	Nov 22 06:53:14 2005	DIFFERENTIAL TENSION
F1:TT	TT	Nov 22 06:53:14 2005	INTEGRATED TRAVEL TIME FROM ACOUSTIC DELTA-T
F1:WTBH		Nov 22 06:53:14 2005	TEMPERATURE OF THE BOREHOLE

CURVE MEASURE POINT OFFSET

CURVE	OFFSET (m)	CURVE	OFFSET (m)	CURVE	OFFSET (m)	CURVE	OFFSET (m)
BIT	0.00	CALX	0.99	GR	18.21		
CAL	0.00	DT24	10.90	TEN	0.00		

Presentation : opul:/dat/a/pass/vul_hro2/dal_rpt.pdf [1:240 Scale]
Plot Interval : 814.807 - 952.993 Meters

Data File 1 : F1 : opul:/dat/a/pass/vul_hro2/1777Jr02.xtf
Created On : Nov 22 06:53:14 2005
Company : VULCAN MINERALS INC.
Well : HURRICANE #2
Field : HURRICANE
File Interval : 814.807 - 952.993 Meters
Dot : 1777Jr



825

850

875

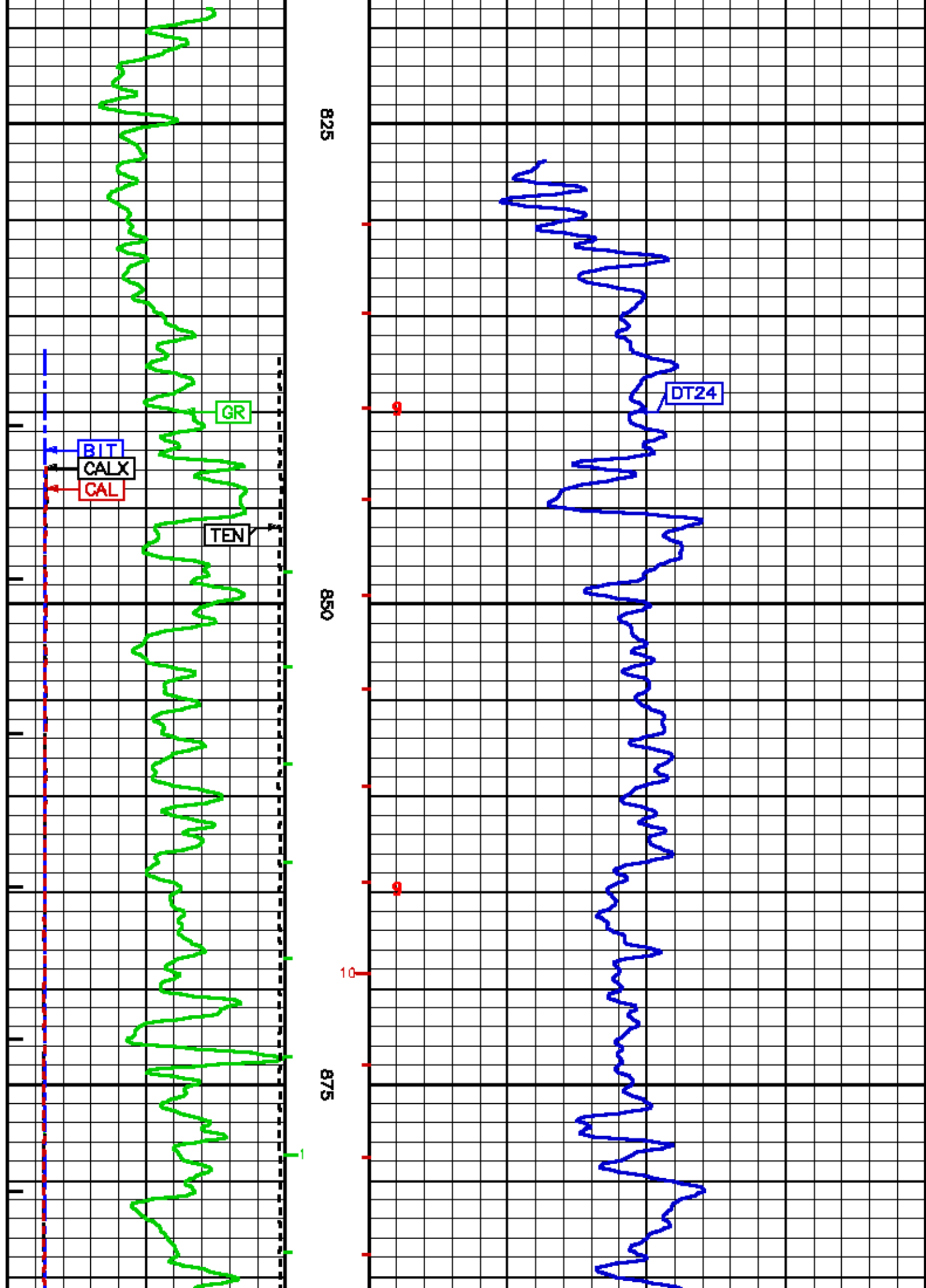
DT24

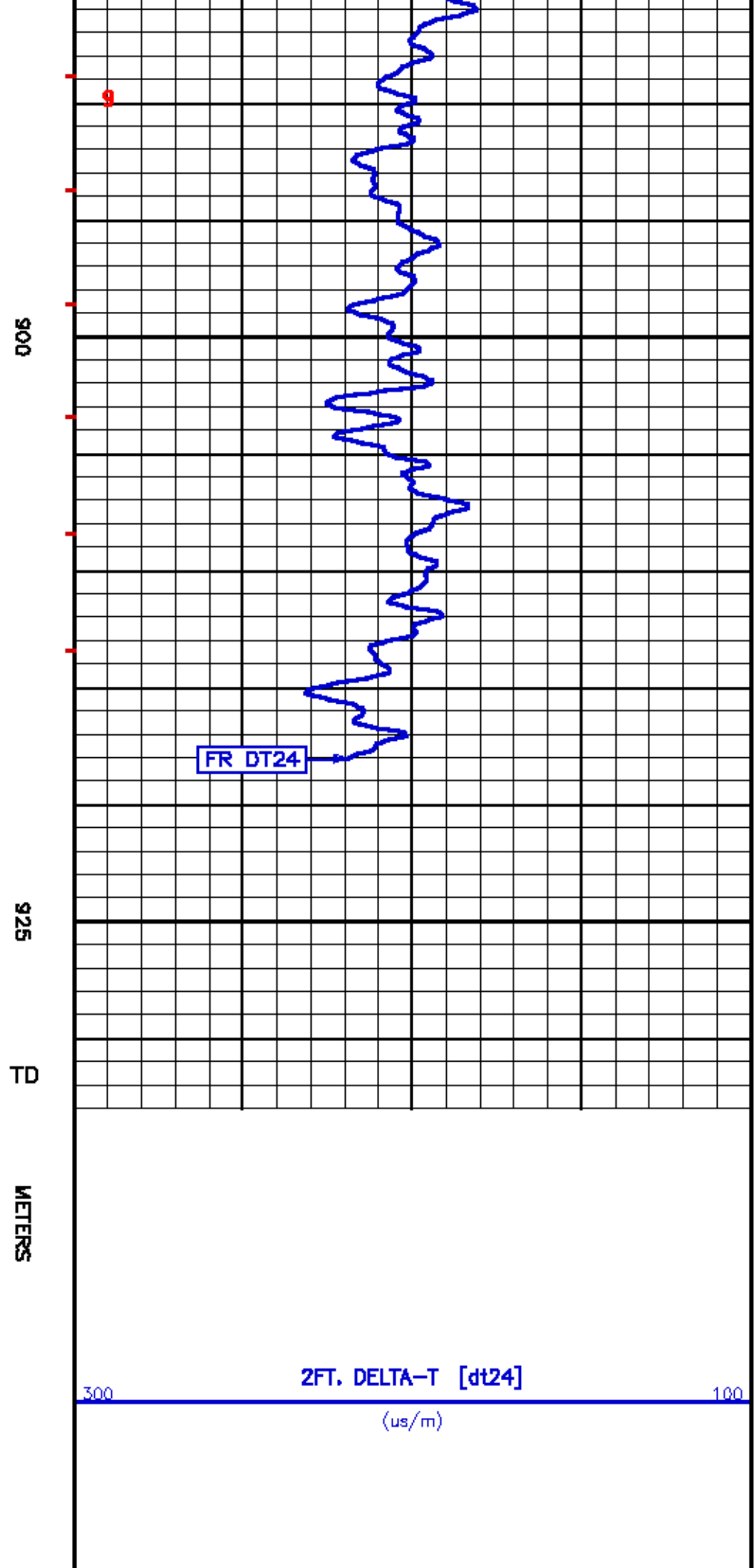
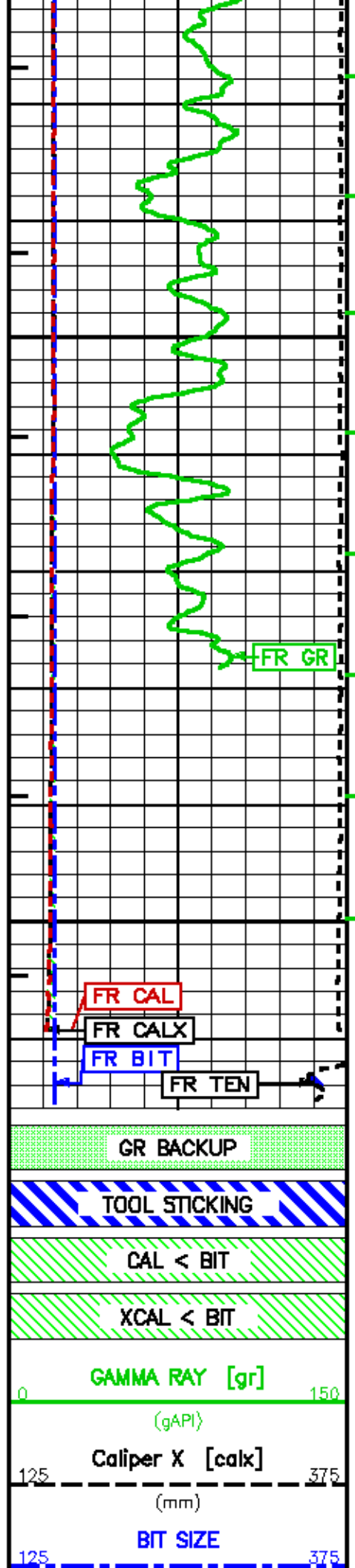
10

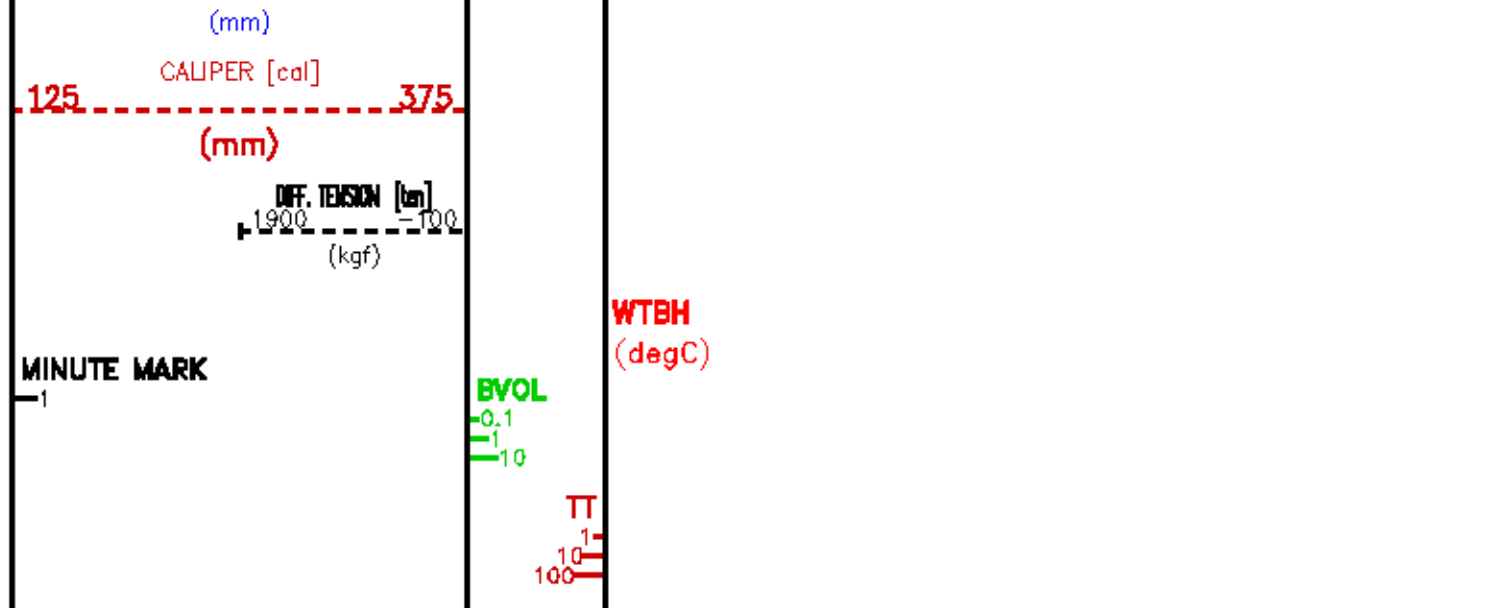
GR

TEN

BIT
CALX
CAL







CALIBRATION / VERIFICATION SUMMARY

Source File: /dal1a/pass/rul_lrc2/1777.b.jp1

GR PRIMARY CALIBRATION SUMMARY

TOOL #: 1329XA 153172

DATE/TIME PERFORMED: Sat Apr 9 15:00:41 2005

UNIT #: 3880SA HL8616

CALB JIG #: 4702NK 01-304

	BACKGROUND (cts/s)	CALBRTR ON (cts/s)	CR DIFF (cts/s)	MULT	BACKGROUND (gAPI)	CALBRTR ON (gAPI)	CALBRTR (gAPI)
GR	376.60	1256.29	879.7	0.171	64.22	214.22	150
			870.0 860.0				

GR PRIMARY VERIFICATION SUMMARY

TOOL #: 1329XA 153172

DATE/TIME PERFORMED: Thu May 12 07:25:21 2005

UNIT #: 3807TA 008616

VERI JIG #: 4702NK 01-304

	BACKGROUND (cts/s)	CALBRTR ON (cts/s)	MULT	BACKGROUND (gAPI)	CALBRTR ON (gAPI)	DIFF. (gAPI)
GR	50.80	966.18	0.171	8.66	164.75	156.09
						140.00 160.00

GR BEFORE LOG VERIFICATION SUMMARY

TOOL #: 1329XA 153172

DATE/TIME PERFORMED: Tue Nov 22 00:59:12 2005

UNIT #: 3807TA 008616 VERI JIG #: 4702NK 01-304

	BACKGROUND (cts/s)	CALBRTR ON (cts/s)	MULT	BACKGROUND (gAPI)	CALBRTR ON (gAPI)	DIFF. (gAPI)
GR	252.91	1219.07	0.171	43.13	207.87	164.74
						146.09 166.08

GR AFTER LOG VERIFICATION SUMMARY

TOOL #: 1329XA 153172 DATE/TIME PERFORMED: Tue Nov 22 08:41:40 2005

UNIT #: 3807TA 008616 VERI JIG #: 4702NK 01-304

	BACKGROUND (cts/s)	CALBRTR ON (cts/s)	MULT	BACKGROUND (gAPI)	CALBRTR ON (gAPI)	DIFF. (gAPI)
GR	173.93	1092.96	0.171	29.66	186.37	156.71
						154.74 174.74

CAL PRIMARY CALIBRATION SUMMARY

TOOL #: 2228MA 153038 DATE/TIME PERFORMED: Fri Sep 23 18:29:49 2005

UNIT #: 3807TA 008616

	SMALL RING (row)	LARGE RING (row)	MULT	ADD	SMALL RING (mm)	LARGE RING (mm)
CALIPER	1415.0	2361.5	0.16101	-75.43520	152.400	304.800

CAL BEFORE LOG VERIFICATION SUMMARY

TOOL #: 2228MA 153038 DATE/TIME PERFORMED: Tue Nov 22 09:52:29 2005

UNIT #: 3807TA 008616

	I.D. (row)	MULT	ADD	I.D. (mm)
CALIPER	1542.2	0.16101	-81.71619	166.600



CAL AFTER LOG VERIFICATION SUMMARY

TOOL #: 2228MA 153038 DATE/TIME PERFORMED: Tue Nov 22 11:43:41 2005

UNIT #: 3807TA 008616

I.D.	MULT	ADD	I.D.
------	------	-----	------

	(row)			(mm)
CALIPER	1564.2	0.16101	-81.71619	170.142
				153.800 179.300

 Baker Atlas 	COMPANY <u>VULCAN MINERALS INC.</u>		FILE NO: _____
	WELL <u>HURRICANE NO. 2 (WHIP #1)</u>		API NO: _____
FIELD <u>BAY ST. GEORGE</u>			
PROVINCE <u>NEWFOUNDLAND</u>			
LOCATION: <u>LIC: 03-107</u> <u>WESTERN NEWFOUNDLAND</u> <u>ST. GEORGES BAY</u> <u>LAT 48.267700 N LONG 58.67228 W</u>		ELEVATIONS: <u>KB 138.3 M</u> <u>DF</u> <u>GL 135.0 M</u>	
		DATE <u>13-DEC-2005</u>	